



COASTAL TREECYCLING

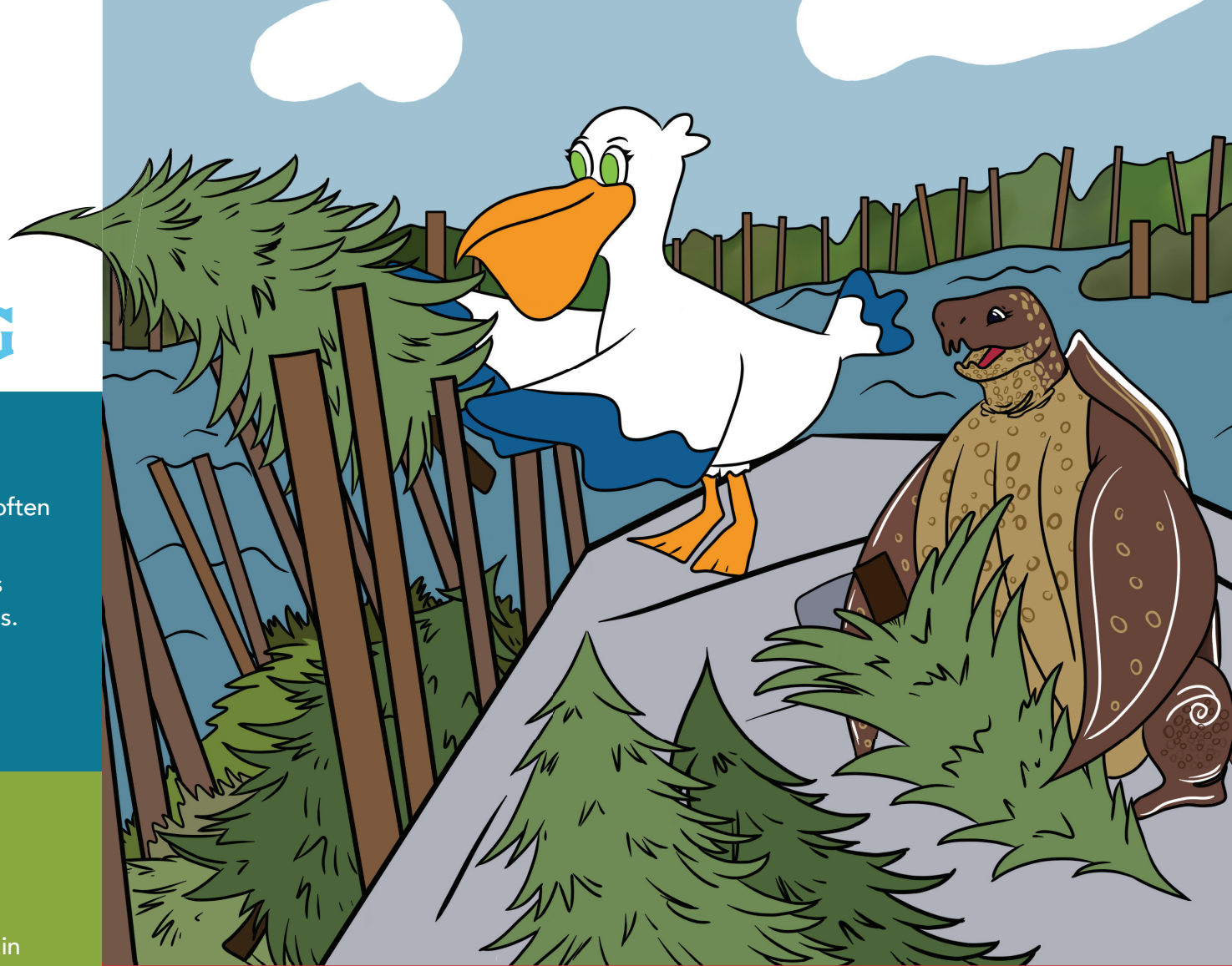
PROJECT BENEFITS

- » Wave dampening fences help absorb and soften waves, thus reducing erosion.
- » Provide habitat and food for wildlife such as crustaceans, mollusks, birds, fish and reptiles.
- » Public awareness and education regarding wetland losses, solid waste issues, and conservation of natural resources.

PROJECT AREA HIGHLIGHTS

- » Over 1,300 feet of wave dampening fences in place for continued protection.
- » Over 2,000 linear feet of shoreline protected by wave fences.
- » More than 20 acres directly impacted with more than 100 acres indirectly impacted.

For more information or to volunteer
contact JP CoastalZone@jeffparish.net
or 504-736-6719



Each year thousands of Christmas trees are donated by Jefferson Parish residents and diverted from landfills to protect wetland habitat within the Barataria Basin. These recycled trees are used to build wave dampening fences located off the shore, helping to reduce coastal erosion.