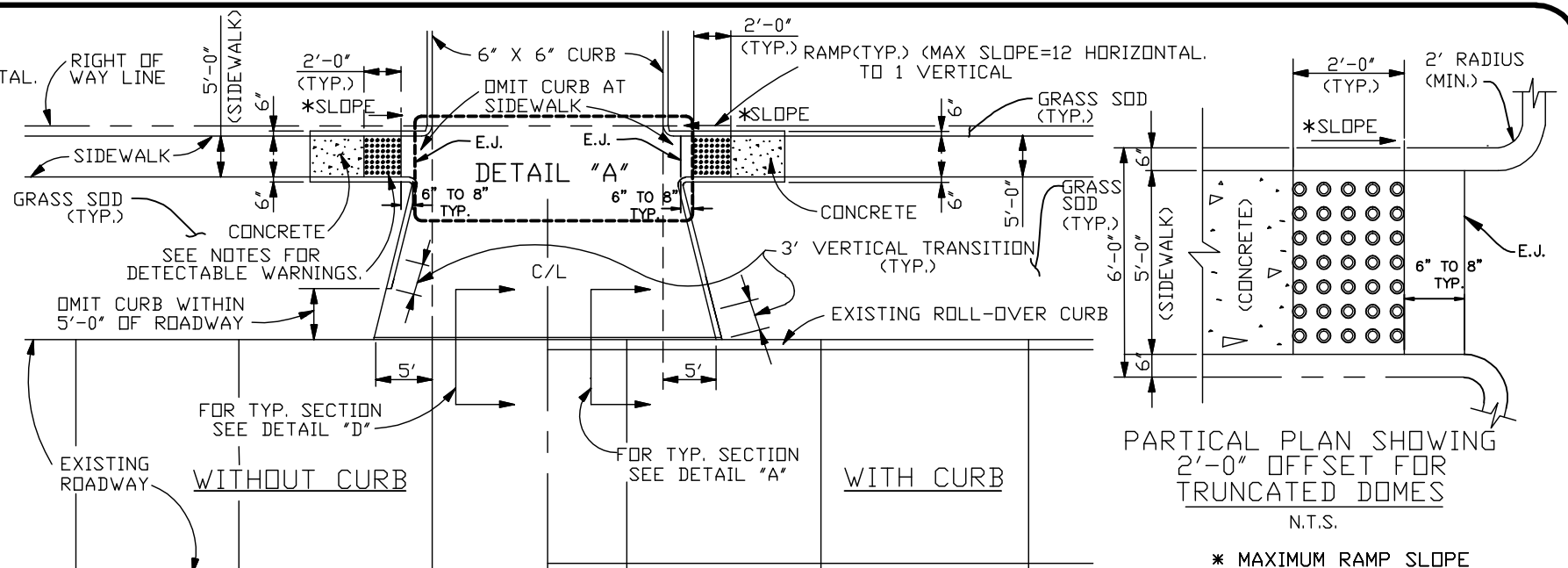


PLAN OF NEW CURBED DRIVEWAY  
CONNECTING TO CURBED ROADWAY  
DETAIL "E"



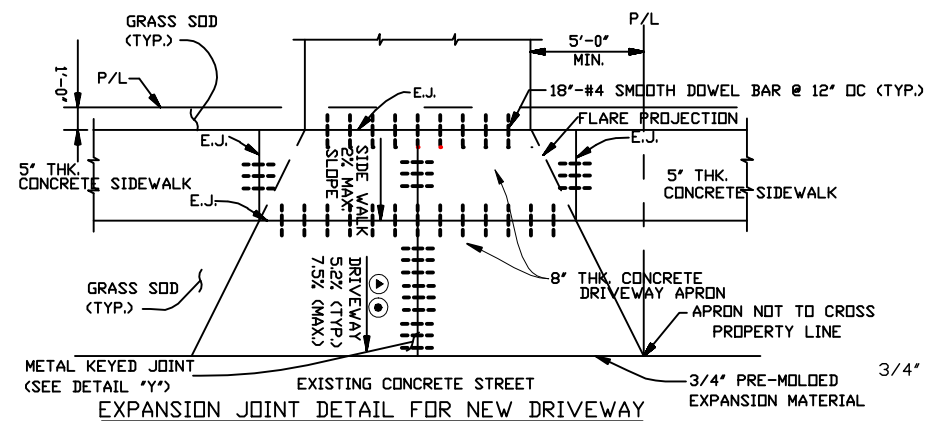
PLAN OF NEW CURBED DRIVEWAY CONNECTING TO  
ROADWAY WITH OR WITHOUT CURBS.

\* MAXIMUM RAMP SLOPE  
12 HORIZONTAL  
1 VERTICAL  
NOT TO EXCEED A RISE GREATER  
THAN 6 INCHES IN 6 FEET.

## DRIVEWAY SPECIFICATIONS

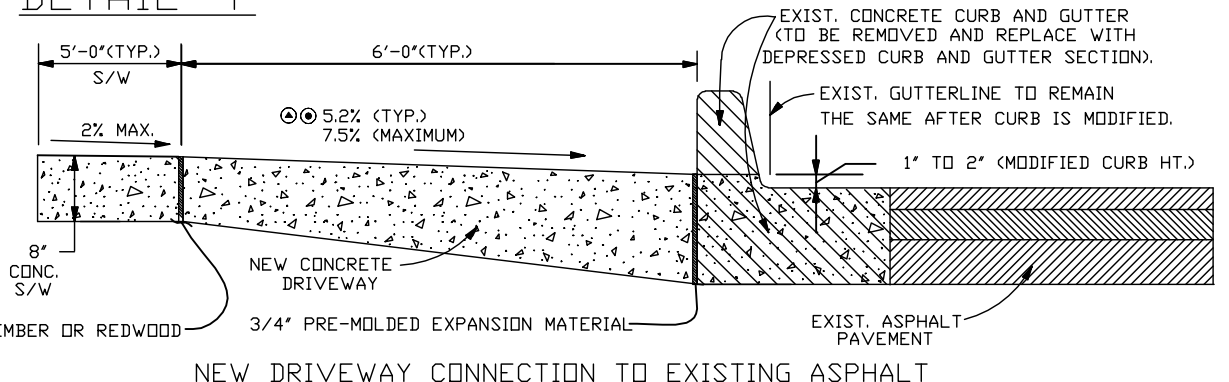
ALL DRIVEWAYS BETWEEN STREET AND PROPERTY LINE TO BE CONSTRUCTED OF PORTLAND CEMENT CONCRETE, WITH A COMPRESSIVE STRENGTH OF 4,000 P.S.I. IN FOURTEEN (14) DAYS AND A MINIMUM THICKNESS OF EIGHT (8") INCHES.

- THE TYPICAL STANDARD DRIVEWAY SLOPE IS 5.2% (5/2" PER FOOT). THE MAXIMUM ALLOWABLE SLOPE IS 7.5% (7 1/2" PER FOOT). ANY DRIVEWAY SLOPE GREATER THAN THE TYPICAL STANDARD SLOPE OF 5.2% (5/2" PER FOOT) MUST BE APPROVED IN WRITING BY MR. ERROL MARTIN, JR., ENGINEERING DIVISION SUPERVISOR, AT 504-349-5173 PRIOR TO CONSTRUCTION.
- DRIVEWAYS MUST BE DESIGNED AND CONSTRUCTED TO PROVIDE FOR A MAXIMUM LONGITUDINAL SIDEWALK SLOPE OF 8.33% (1" PER FOOT), NOT TO EXCEED A RISE GREATER THAN 6 INCHES IN 6 FEET, WHICH INCLUDES THE LONGITUDINAL TRANSITION FROM NEW SIDEWALK TO EXISTING SIDEWALK LOCATED AT THE ADJACENT PROPERTY LINE.



DETAIL "A"  
N.T.S.

## DETAIL "F"



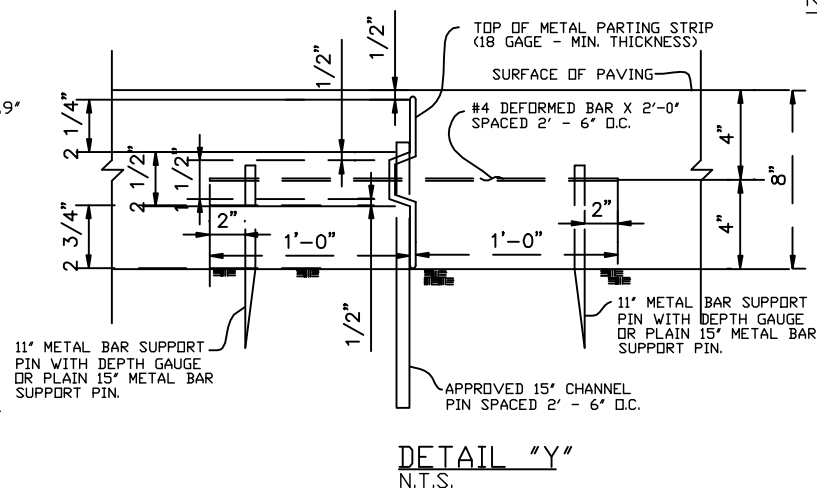
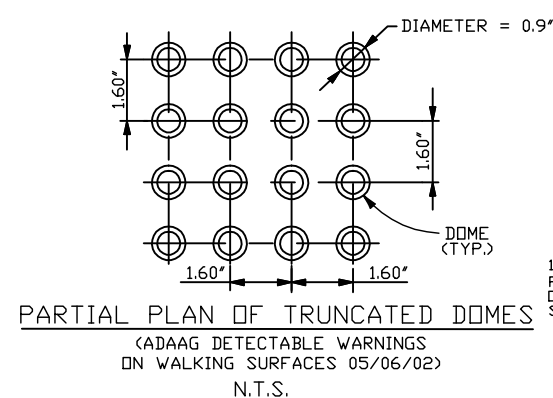
NEW DRIVEWAY CONNECTION TO EXISTING ASPHALT  
ROADWAY WITH CURB AND GUTTER  
SCALE: N.T.S.

## DETAIL "G"

## COMMERCIAL PLAN OF DETAIL NO. 2

## NOTES:

- TRUNCATED DOMES IN A DETECTABLE WARNING SURFACE SHALL HAVE A BASE DIAMETER OF 0.9 INCHES (23 mm) MINIMUM TO 1.4 INCHES (36 mm) MAXIMUM, A TOP DIAMETER OF 50% OF THE BASE DIAMETER MINIMUM TO 65% OF THE BASE DIAMETER MAXIMUM, AND A HEIGHT OF 0.2 INCHES (5 mm).
- TRUNCATED DOMES IN A DETECTABLE WARNING SURFACE SHALL HAVE A CENTER-TO-CENTER SPACING OF 1.6 INCHES (41 mm) MINIMUM AND 2.4 INCHES (61 mm) MAXIMUM, AND A BASE-TO-BASE SPACING OF 0.65 INCHES (16 mm) MINIMUM, MEASURED BETWEEN THE MOST ADJACENT DOMES ON SQUARE GRID.
- TRUNCATED DOMES ON CURB RAMPS WITHIN THE STREET R.O.W. SHALL BE CAST-IN PLACE. PREFABRICATED DETECTABLE WARNING UNITS INSTALLED DIRECTLY IN WET CONCRETE, SURFACE APPLIED OR SURFACE MOUNTED SYSTEMS WITH MECHANICAL OR ADHESIVE ANCHORAGE ARE NOT ACCEPTABLE.
- TRUNCATED DOMES SHALL COVER AT LEAST 2 FEET IN DEPTH AND EXTEND FULL WIDTH OF THE RAMP. ANY RAMP HAVING FLARED SIDES WILL NOT BE REQUIRED TO HAVE THESE DETECTABLE WARNINGS ON THE FLARES.
- THE LIMITS OF THE MAIN SURFACE OF THE RAMP ON WHICH THE DETECTABLE WARNINGS ARE PLACED SHALL HAVE A REDDISH COLOR SIMILAR TO THAT OF "TERRA COTTA". THE COLOR MUST BE APPROVED BY JEFFERSON PARISH DEPARTMENT OF ENGINEERING.
- STAMPING OF TRUNCATED DOMES WITHIN THE R.O.W. WILL NOT BE ALLOWED.



DETAIL "Y"  
N.T.S.

NOTED:  
PRE-POUR INSPECTIONS ARE  
REQUIRED. CALL THE  
DEPARTMENT OF ENGINEERING  
AT 504-349-5173 FOR  
APPOINTMENT.

JEFFERSON PARISH DEPARTMENT OF ENGINEERING			
STANDARD DETAILS FOR CONNECTING DRIVEWAYS TO EXISTING ROADWAYS			
DRAWN BY:	T.V.C.	DATE:	08/03/93
REVISOR BY:	H.J.W.	DATE:	07/26/02
REVISOR BY:	H.J.W.	DATE:	02/16/05
REVISOR BY:	J.L.	DATE:	06/01/07
REVISOR BY:	C.J.	DATE:	07/06/10
REVISOR BY:	C.J.	DATE:	05/26/11
REVISOR BY:	J.W.	DATE:	12/08/15
REVISOR BY:	C.H.S.	DATE:	02/20/19
XGDS:	AUTOCAD 2012/LT.	VIN:	DETAIL-2.DWG
FILE NUMBER:	ENV-09		

SCALE: N.T.S.