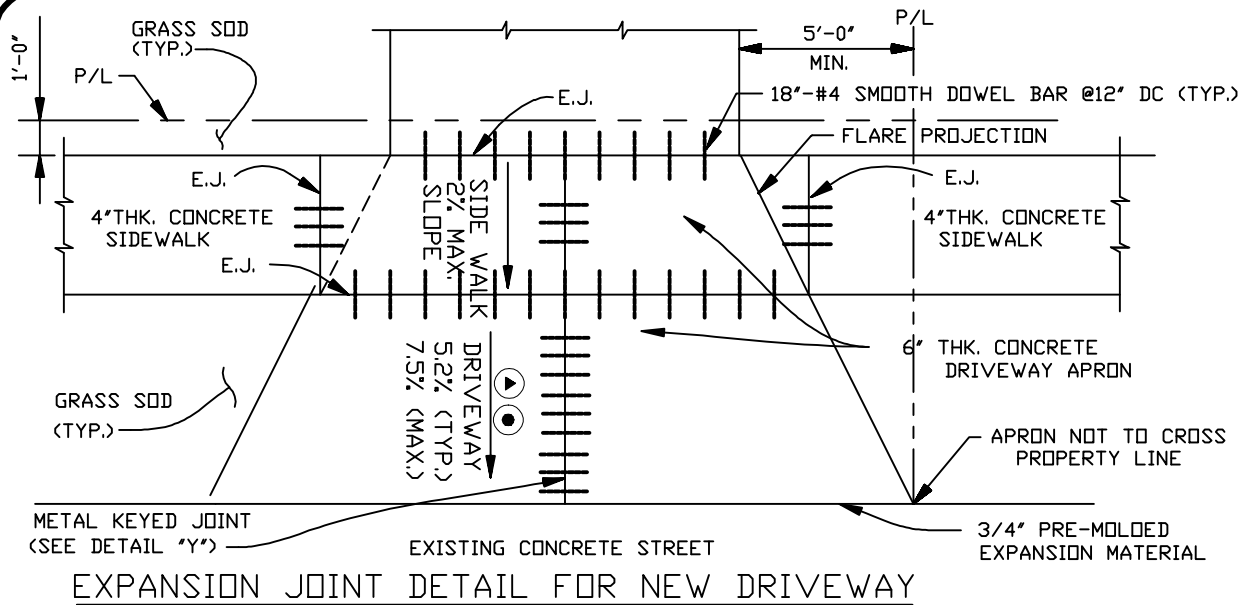


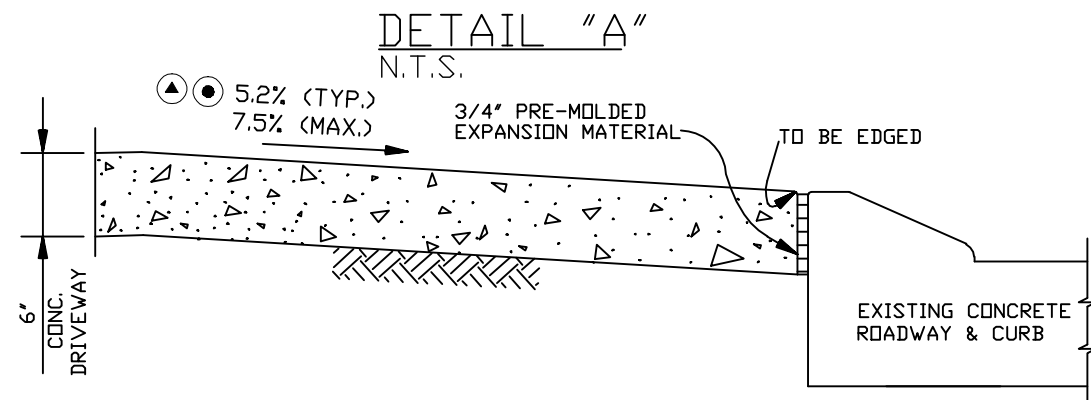
RESIDENTIAL DRIVEWAY SPECIFICATIONS

1. CONTACT THE DEPARTMENT OF ENGINEERING AT (504) 349-5173 PRIOR TO BEGINNING ANY DRIVEWAY CONSTRUCTION. ANY DEVIATION FROM STANDARD DETAILS AND SPECIFICATIONS WILL NEED THE APPROVAL OF THE DIRECTOR OF ENGINEERING.
2. ALL DRIVEWAYS SHALL BE CONSTRUCTED OF PORTLAND CEMENT CONCRETE AND HAVE A COMPRESSIVE STRENGTH OF FOUR THOUSAND (4000) POUNDS PER SQUARE INCH IN FOURTEEN (14) DAYS. PATTERNED CONCRETE OR BRICK PAVERS ARE ACCEPTABLE.
NOTE: THE OWNER MUST SIGN A WAIVER FORM FOR ANY PATTERNED CONCRETE OR BRICKS PUT ON THE PARISH RIGHT OF WAY. SEE ATTACHED LIST OF VARIOUS WAIVER FORMS WHICH ARE UTILIZED.
3. ALL (PCC) DRIVEWAYS SHALL HAVE A MINIMUM THICKNESS OF SIX (6) INCHES.
4. TYPICAL DRIVEWAYS SHALL BE CONSTRUCTED WITH A MINIMUM DISTANCE OF FIVE (5) FEET FROM THE SIDE PROPERTY LINE AND THE APRON SHALL NOT CROSS THE SIDE PROPERTY LINE.
5. ALL DRIVEWAYS SHALL HAVE A MAXIMUM WIDTH OF TWENTY-FIVE (25) FEET AT THE PROPERTY LINE AND A MAXIMUM OF THIRTY-FIVE (35) FEET AT THE STREET.
6. LONGITUDINAL TRANSITIONS FOR SIDEWALKS MEET DRIVEWAYS SHALL NOT EXCEED ONE (1) INCH DROP EVERY TWELVE (12) INCHES, WITH A MAXIMUM OF 6 INCHES RISE IN 6 FEET.
7. DRIVEWAY APRONS FOURTEEN (14) FEET AND WIDER MUST HAVE A METAL KEYED JOINT. (SEE DETAIL "Y").

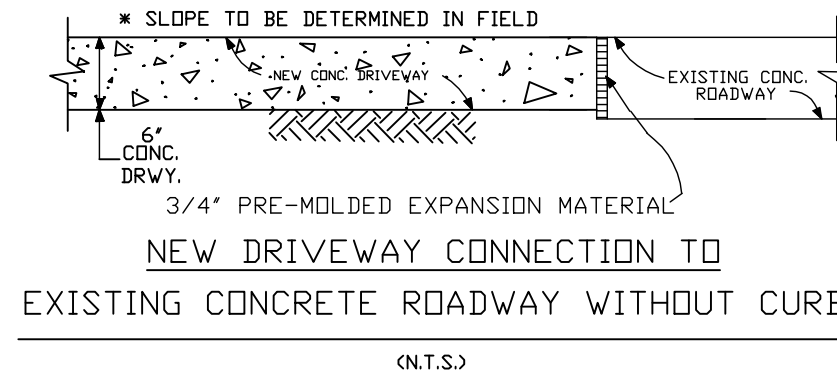


NOTED:
PRE-POUR INSPECTIONS ARE REQUIRED. CALL THE DEPARTMENT OF ENGINEERING AT 504-349-5173 FOR APPOINTMENT.

EXPANSION JOINT DETAIL FOR NEW DRIVEWAY



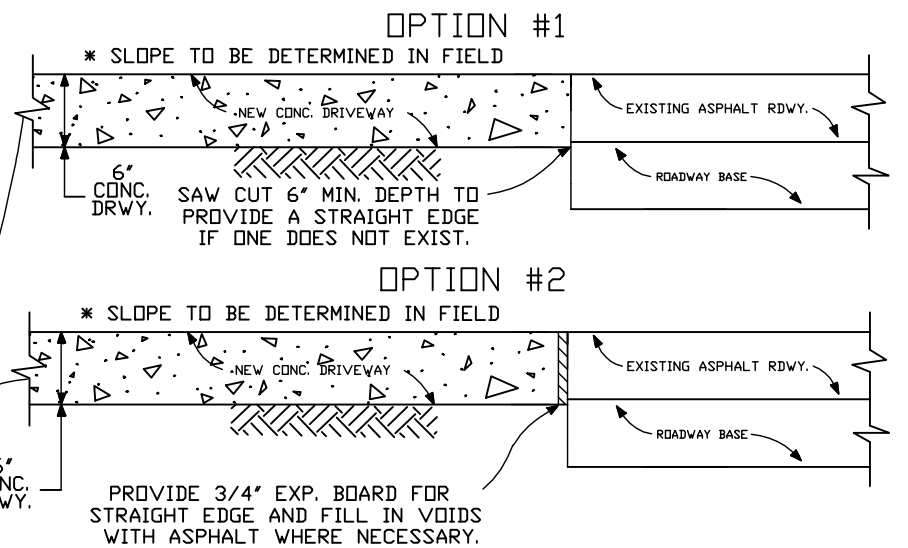
NEW DRIVEWAY CONNECTION TO EXISTING CONCRETE ROADWAY WITH ROLLOVER CURB (CURB TO REMAIN)
(N.T.S.)



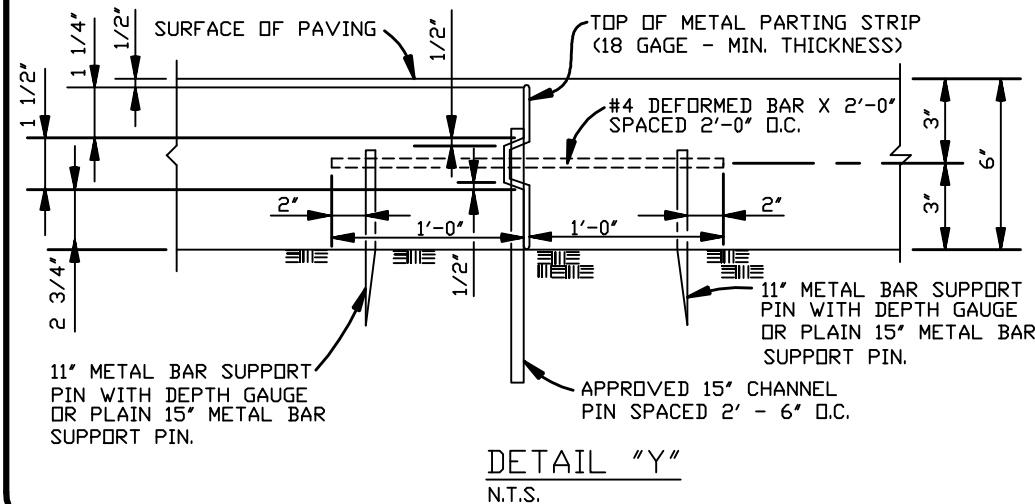
* FOR CONSTRUCTION OF DRIVEWAYS ON PUBLIC RIGHT-OF-WAY WHICH TIE TO AN EXISTING ROADWAY WITHOUT AN EXISTING CURB, ELEVATION REQUIREMENTS MUST BE DETERMINED BY THE DEPARTMENT OF ENGINEERING. CONTACT THE DEPARTMENT AT (504) 349-5173 TO ARRANGE FOR DETERMINATION OF THE ELEVATION REQUIREMENTS.

LIST OF VARIOUS WAIVER FORMS

1. WAIVER FOR ANY FORM OF PATTERNED CONCRETE WHETHER DYED, STAMPED, BRICK PAVERS OR BRICK EDGING.
 2. WAIVER FOR NO SIDEWALK IN BLOCK AREA. (THIS WAIVER IS A NOTARIZED DOCUMENT WHICH REQUIRES PRIOR COMMUNICATION WITH THE DEPT. OF ENGINEERING BEFORE COMING IN TO SIGN.)
 3. HOLD HARMLESS AGREEMENT FOR BRICK MAILBOX. THIS ALSO SERVES AS A PERMIT TO HAVE MAILBOX OVER PARISH RIGHT OF WAY.
- (A) THE TYPICAL STANDARD SLOPE WITHIN (A) IS 5.2% (5/8 PER FOOT). THE MAXIMUM ALLOWABLE SLOPE WITHIN (A) IS 7.5% (3/2 PER FOOT). IN THE VICINITY OF AREAS ADJACENT TO EXISTING OR PROPOSED DRIVEWAYS, ANY SLOPE GREATER THAN THE TYPICAL STANDARD SLOPE OF 5.2% (5/8 PER FOOT) MUST BE APPROVED IN WRITING BY MR. ERROL MARTIN, JR., ENGINEERING DIVISION SUPERVISOR, AT 504-736-6793 PRIOR TO CONSTRUCTION.
- (B) DRIVEWAYS MUST BE DESIGNED AND CONSTRUCTED TO PROVIDE FOR A MAXIMUM LONGITUDINAL SIDEWALK SLOPE OF 8.33% (1' PER FOOT), NOT TO EXCEED A RISE GREATER THAN 6 INCHES IN 6 FEET, WHICH INCLUDES THE LONGITUDINAL TRANSITION FROM NEW SIDEWALK TO EXISTING SIDEWALK LOCATED AT THE ADJACENT PROPERTY LINE.



NEW DRIVEWAY CONNECTION TO EXISTING ASPHALT ROADWAY WITHOUT CURB.



DETAIL "Y"
N.T.S.

(A)	(B)
1'	5/8'
2'	1 1/4'
3'	1 7/8'
4'	2 1/2'
5'	3 1/8'
6'	3 3/4'
7'	4 3/8'

JEFFERSON PARISH DEPARTMENT OF ENGINEERING					
STANDARD RESIDENTIAL DETAILS FOR CONNECTING DRIVEWAYS TO EXISTING ROADWAYS					
DATE	BY	DATE	BY	DATE	BY
06/11/04	C.H.S.	07/29/04	H.J.W.	02/09/07	P.S.
02/09/07	C.H.S.	06/01/07	V.V.	05/12/08	P.S.
06/01/07	J.L.	05/24/15	C.J.	12/05/16	C.H.S.
05/12/08	J.L.	11-19-18	C.H.S.		
05/13/11	C.J.				
01/20/16	C.H.S.				
01/18/17	C.H.S.				
01/28/19	C.H.S.				
FILE NUMBER: AUTOCAD 2008		VBA: RESIDENTIALDRIVE.DWG			
ENV-09					