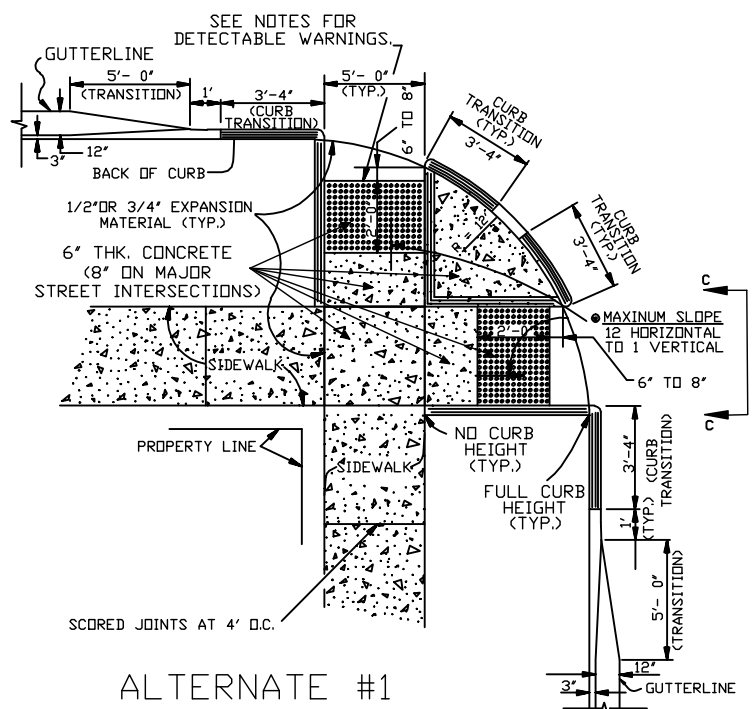


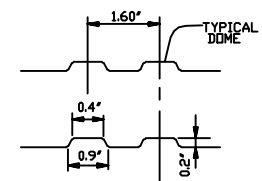
NOTES:

1. TRUNCATED DOMES IN A DETECTABLE WARNING SURFACE SHALL HAVE A BASE DIAMETER OF 0.9 INCHES (23 mm) MINIMUM TO 1.4 INCHES (36 mm) MAXIMUM, A TOP DIAMETER OF 50% OF THE BASE DIAMETER MINIMUM TO 65% OF THE BASE DIAMETER MAXIMUM, AND A HEIGHT OF 0.2 INCHES (5 mm).
2. TRUNCATED DOMES IN A DETECTABLE WARNING SURFACE SHALL HAVE A CENTER-TO-CENTER SPACING OF 1.6 INCHES (41 mm) MINIMUM AND 2.4 INCHES (61 mm) MAXIMUM, AND A BASE-TO-BASE SPACING OF 0.65 INCHES (16 mm) MINIMUM, MEASURED BETWEEN THE MOST ADJACENT DOMES ON SQUARE GRID.
3. TRUNCATED DOMES ON CURB RAMPS WITHIN THE STREET R.O.W. SHALL BE PREFABRICATED DETECTABLE WARNING UNITS INSTALLED DIRECTLY IN NEWLY POURED CONCRETE.
4. TRUNCATED DOMES SHALL COVER AT LEAST 2 FEET IN DEPTH AND EXTEND FULL WIDTH OF THE RAMP. ANY RAMP HAVING FLARED SIDES WILL NOT BE REQUIRED TO HAVE THESE DETECTABLE WARNINGS ON THE FLARES.
5. THE LIMITS OF THE MAIN SURFACE OF THE RAMP ON WHICH THE DETECTABLE WARNINGS ARE PLACED SHALL HAVE A REDDISH COLOR SIMILAR TO THAT OF "TERRA COTTA". THE COLOR MUST BE APPROVED BY JEFFERSON PARISH DEPARTMENT OF ENGINEERING.
6. STAMPING OF TRUNCATED DOMES WITHIN THE R.O.W. WILL NOT BE ALLOWED.

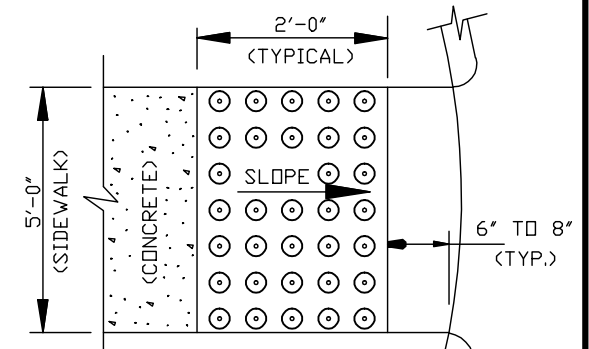
NOTED!
PRE-POUR INSPECTIONS ARE REQUIRED. CALL THE DEPARTMENT OF ENGINEERING AT 504-349-5173 FOR APPOINTMENT.



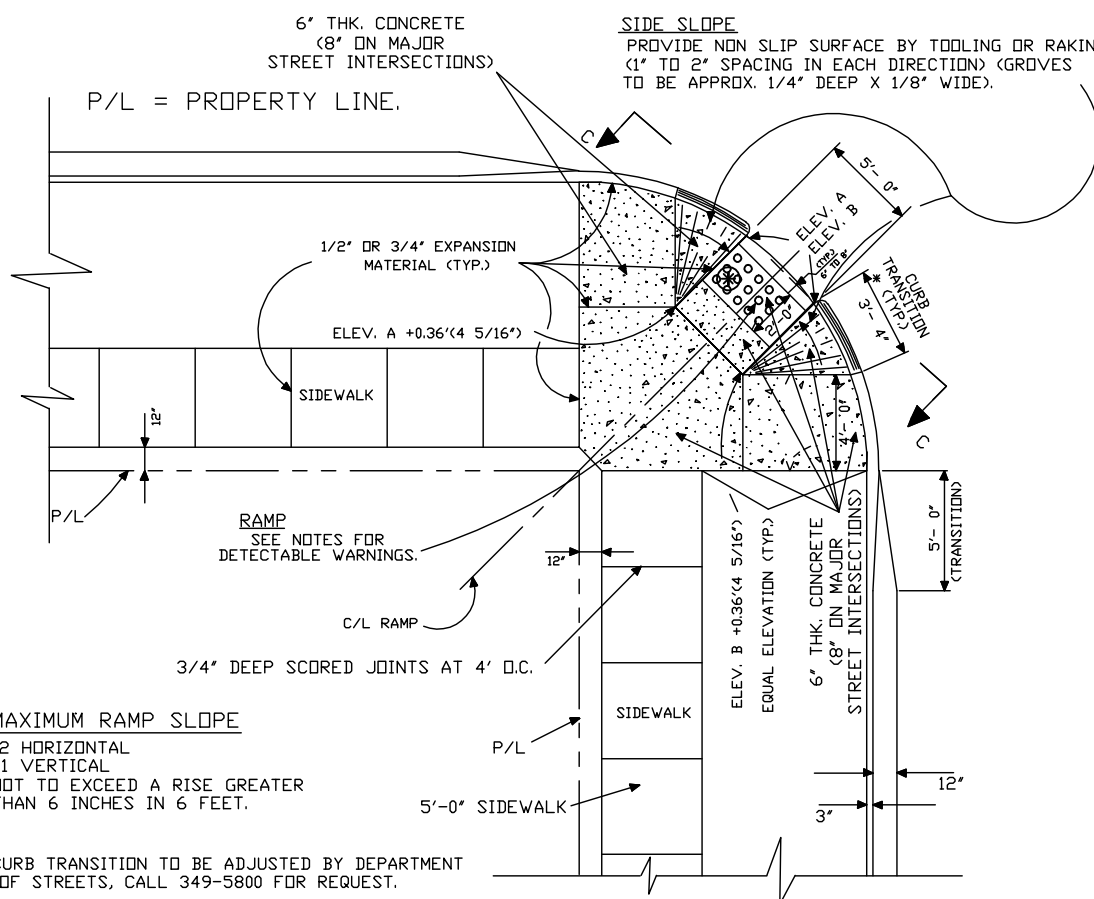
**ALTERNATE #1
PLAN OF CURB RAMP
FOR THE HANDICAPPED**
(WITH APPROVAL OF THE DEPT. OF ENGINEERING)
(CORNER RADIUS = 12FT.)
N.T.S.



SECTION THRU TRUNCATED DOMES
(ADAAG DETECTABLE WARNINGS ON WALKING SURFACES 05/06/02)
N.T.S.



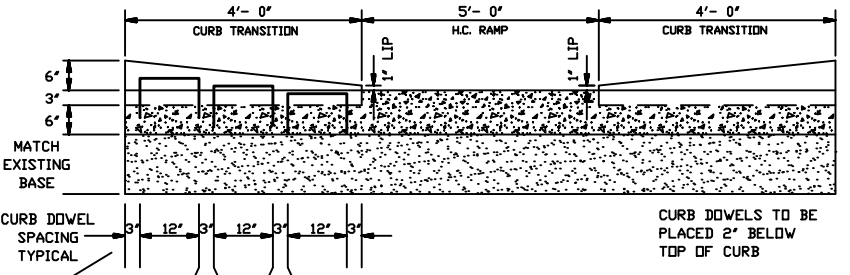
PARTIAL PLAN SHOWING 2'-0" OFF SET FOR TRUNCATED DOMES
N.T.S.



MAXIMUM RAMP SLOPE
12 HORIZONTAL
1 VERTICAL
NOT TO EXCEED A RISE GREATER THAN 6 INCHES IN 6 FEET.

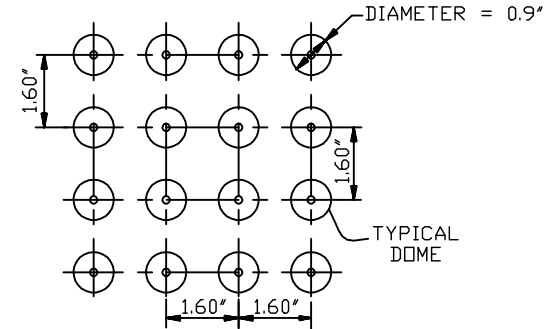
* CURB TRANSITION TO BE ADJUSTED BY DEPARTMENT OF STREETS, CALL 349-5800 FOR REQUEST.

PLAN OF TYPICAL SIDEWALK WITH RAMP FOR HANDICAPPED
N.T.S.

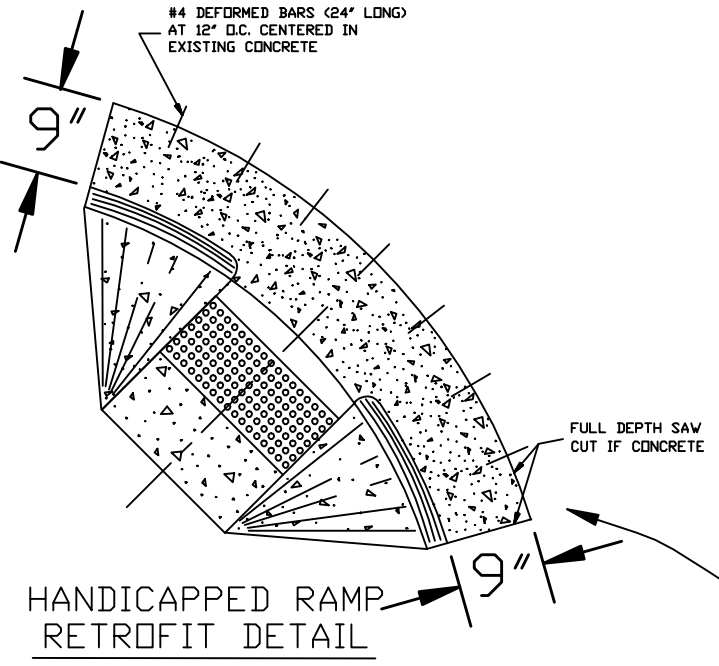


**H.C. RAMP CURB DETAIL
VIEW "C - C"**
N.T.S.

NOTE FOR HANDICAPPED RAMP CONNECTION TO EXISTING ROAD
FOR CONCRETE ROADWAY CONTRACTOR SHALL MAKE FULL DEPTH SAW-CUT FROM THE GUTTER LINE-9" IN THE ROADBED. REPLACE WITH HANDICAPPED ACCESSIBLE CURBING. IF CURB IS NOT POURED MONOLITHICALLY, CONCRETE WILL NEED TO BE DEPRESSED THREE (3) INCHES AT CURB LOCATIONS TO ALLOW FOR CURB DOWELS.
FOR ASPHALT ROADWAY CONTRACTOR SHALL MAKE FULL DEPTH SAW-CUT TO REMOVE EXISTING CURB AND GUTTER (AND POSSIBLE ASPHALT OVERLAY), AND REPLACE WITH HANDICAPPED ACCESSIBLE CURBING. IF CURB IS NOT POURED MONOLITHICALLY WITH GUTTER, CONCRETE WILL NEED TO BE DEPRESSED THREE (3) INCHES AT CURB LOCATIONS TO ALLOW FOR CURB DOWELS.



PARTIAL PLAN OF TRUNCATED DOMES
(ADAAG DETECTABLE WARNINGS ON WALKING SURFACES 05/06/02)
(N.T.S.)



JEFFERSON PARISH DEPARTMENT OF ENGINEERING			
DRAWING TITLE			
STANDARD RESIDENTIAL DETAILS FOR CONNECTING HANDICAPPED RAMPS TO EXISTING ROADWAYS			
DRAWN BY:	DATE:	CHECKED BY:	DATE:
C.S.	06/11/04	H.J.W.	07/29/04
REVISOR BY:	DATE:	REVISOR BY:	DATE:
C.S.	02/09/07	P.S.	02/09/07
REVISOR BY:	DATE:	REVISOR BY:	DATE:
J.L.	06/01/07	P.S.	06/01/07
REVISOR BY:	DATE:	REVISOR BY:	DATE:
J.L.	05/12/08	P.S.	05/12/08
REVISOR BY:	DATE:	REVISOR BY:	DATE:
C.H.S.	02/19/09	C.J.	10/08/10
REVISOR BY:	DATE:	REVISOR BY:	DATE:
C.J.	05/13/11	J.W.	07/28/14
REVISOR BY:	DATE:	REVISOR BY:	DATE:
CHS	01/18/17	C.H.S.	02/20/19
REVISOR BY:	DATE:	REVISOR BY:	DATE:
-	-	-	-
XREFS:	AUTOCAD 2008	WDB RESIDENTIALHANDRAMP.DWG	
FILE NUMBER:	ENV-09		