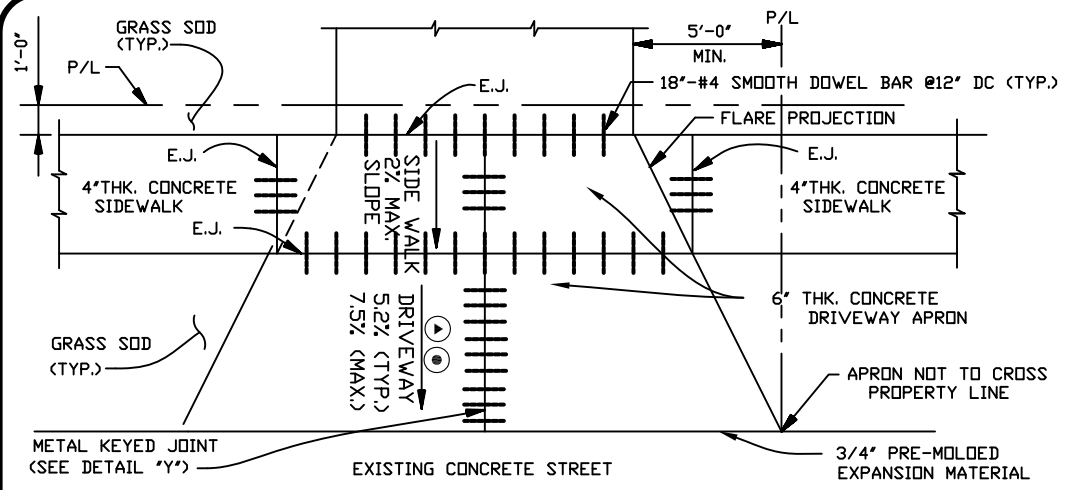


RESIDENTIAL DRIVEWAY SPECIFICATIONS

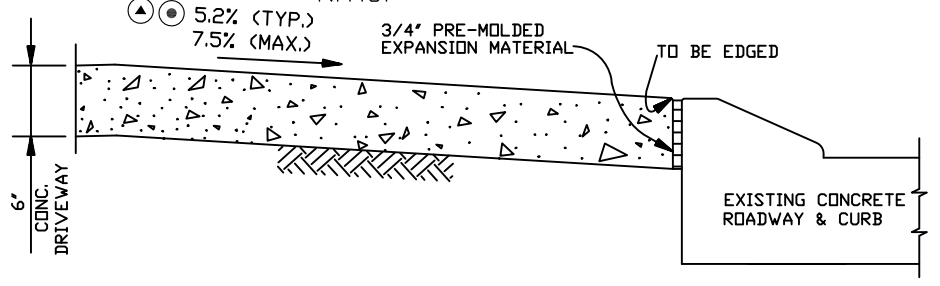
1. CONTACT THE DEPARTMENT OF ENGINEERING AT (504) 349-5173 PRIOR TO BEGINNING ANY DRIVEWAY CONSTRUCTION. ANY DEVIATION FROM STANDARD DETAILS AND SPECIFICATIONS WILL NEED THE APPROVAL OF THE DIRECTOR OF ENGINEERING.
2. ALL DRIVEWAYS SHALL BE CONSTRUCTED OF PORTLAND CEMENT CONCRETE AND HAVE A COMPRESSIVE STRENGTH OF FOUR THOUSAND (4000) POUNDS PER SQUARE INCH IN FOURTEEN (14) DAYS. PATTERNED CONCRETE OR BRICK PAVERS ARE ACCEPTABLE.
NOTE: THE OWNER MUST SIGN A WAIVER FORM FOR ANY PATTERNED CONCRETE OR BRICKS PUT ON THE PARISH RIGHT OF WAY. SEE ATTACHED LIST OF VARIOUS WAIVER FORMS WHICH ARE UTILIZED.
3. ALL (PCC) DRIVEWAYS SHALL HAVE A MINIMUM THICKNESS OF SIX (6) INCHES.
4. TYPICAL DRIVEWAYS SHALL BE CONSTRUCTED WITH A MINIMUM DISTANCE OF FIVE (5) FEET FROM THE SIDE PROPERTY LINE AND THE APRON SHALL NOT CROSS THE SIDE PROPERTY LINE.
5. ALL DRIVEWAYS SHALL HAVE A MAXIMUM WIDTH OF TWENTY-FIVE (25) FEET AT THE PROPERTY LINE AND A MAXIMUM OF THIRTY-FIVE (35) FEET AT THE STREET.
6. LONGITUDINAL TRANSITIONS FOR SIDEWALKS MEET DRIVEWAYS SHALL NOT EXCEED ONE (1) INCH DROP EVERY TWELVE (12) INCHES, WITH A MAXIMUM OF 6 INCHES RISE IN 6 FEET.
7. DRIVEWAY APRONS FOURTEEN (14) FEET AND WIDER MUST HAVE A METAL KEYED JOINT. (SEE DETAIL "Y").



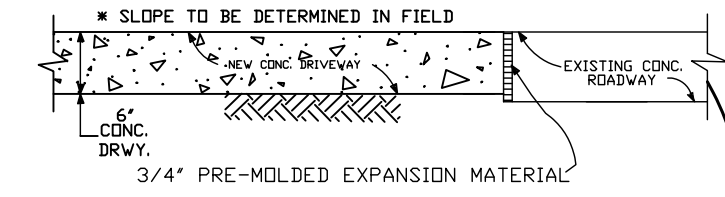
NOTED:
PRE-POUR INSPECTIONS ARE REQUIRED. CALL THE DEPARTMENT OF ENGINEERING AT 504-349-5173 FOR APPOINTMENT.

EXPANSION JOINT DETAIL FOR NEW DRIVEWAY

DETAIL "A"
N.T.S.

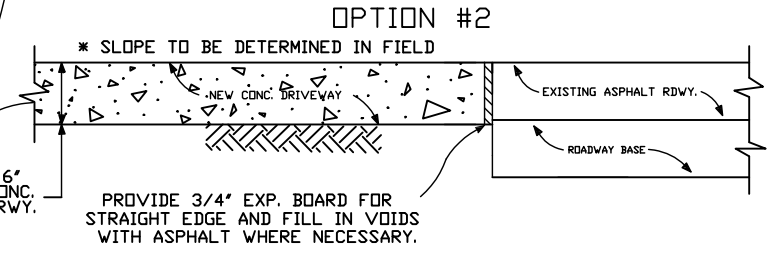
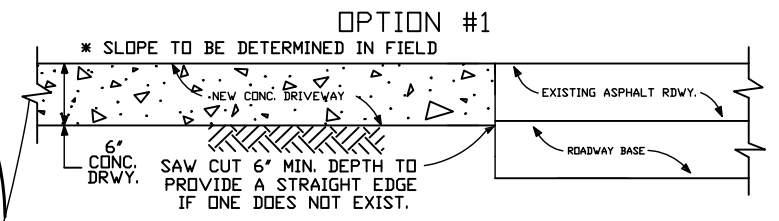


NEW DRIVEWAY CONNECTION TO EXISTING CONCRETE ROADWAY WITH ROLLOVER CURB (CURB TO REMAIN)
(N.T.S.)



NEW DRIVEWAY CONNECTION TO EXISTING CONCRETE ROADWAY WITHOUT CURB
(N.T.S.)

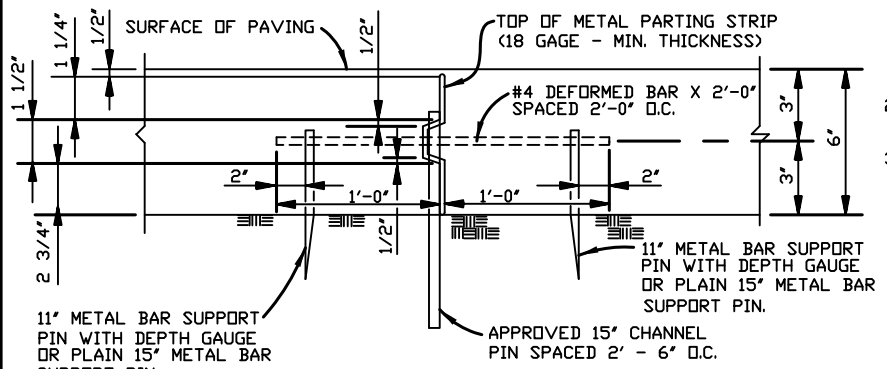
* FOR CONSTRUCTION OF DRIVEWAYS ON PUBLIC RIGHT-OF-WAY WHICH TIE TO AN EXISTING ROADWAY WITHOUT AN EXISTING CURB, ELEVATION REQUIREMENTS MUST BE DETERMINED BY THE DEPARTMENT OF ENGINEERING. CONTACT THE DEPARTMENT AT (504) 349-5173 TO ARRANGE FOR DETERMINATION OF THE ELEVATION REQUIREMENTS.



NEW DRIVEWAY CONNECTION TO EXISTING ASPHALT ROADWAY WITHOUT CURB.

LIST OF VARIOUS WAIVER FORMS

1. WAIVER FOR ANY FORM OF PATTERNED CONCRETE WHETHER DYED, STAMPED, BRICK PAVERS OR BRICK EDGING.
 2. WAIVER FOR NO SIDEWALK IN BLOCK AREA. (THIS WAIVER IS A NOTARIZED DOCUMENT WHICH REQUIRES PRIOR COMMUNICATION WITH THE DEPT. OF ENGINEERING BEFORE COMING IN TO SIGN.)
 3. HOLD HARMLESS AGREEMENT FOR BRICK MAILBOX. THIS ALSO SERVES AS A PERMIT TO HAVE MAILBOX OVER PARISH RIGHT OF WAY.
- Ⓐ THE TYPICAL STANDARD SLOPE WITHIN Ⓐ IS 5.2% (5/8 PER FOOT). THE MAXIMUM ALLOWABLE SLOPE WITHIN Ⓐ IS 7.5% (3/4 PER FOOT). IN THE VICINITY OF AREAS ADJACENT TO EXISTING OR PROPOSED DRIVEWAYS, ANY SLOPE GREATER THAN THE TYPICAL STANDARD SLOPE OF 5.2% (5/8 PER FOOT) MUST BE APPROVED IN WRITING BY MR. ERROL MARTIN, JR., ENGINEERING DIVISION SUPERVISOR. AT 504-736-6793 PRIOR TO CONSTRUCTION.
- Ⓑ DRIVEWAYS MUST BE DESIGNED AND CONSTRUCTED TO PROVIDE FOR A MAXIMUM LONGITUDINAL SIDEWALK SLOPE OF 8.33% (1' PER FOOT), NOT TO EXCEED A RISE GREATER THAN 6 INCHES IN 6 FEET, WHICH INCLUDES THE LONGITUDINAL TRANSITION FROM NEW SIDEWALK TO EXISTING SIDEWALK LOCATED AT THE ADJACENT PROPERTY LINE.



DETAIL "Y"
N.T.S.

Ⓐ	Ⓑ
1'	3/8"
2'	1 1/4"
3'	1 7/8"
4'	2 1/2"
5'	3 3/8"
6'	3 3/4"
7'	4 3/4"

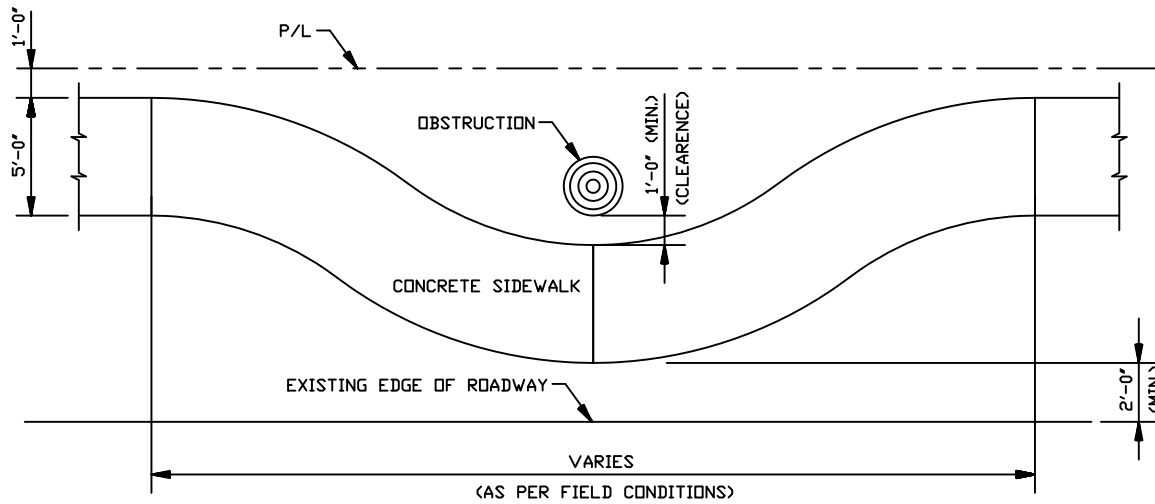
JEFFERSON PARISH DEPARTMENT OF ENGINEERING

STANDARD RESIDENTIAL DETAILS FOR CONNECTING DRIVEWAYS TO EXISTING ROADWAYS

REVISION NO.	DATE	BY	CHECKED BY	DATE
1	06/11/04	C.H.S.	H.J.W.	07/29/04
2	02/09/07	C.H.S.	P.S.	02/09/07
3	06/01/07	J.L.	V.V.	06/01/07
4	05/12/08	J.L.	P.S.	05/12/08
5	05/13/11	C.J.	C.J.	05/24/15
6	01/20/16	C.H.S.	C.H.S.	12/05/16
7	01/18/17	C.H.S.	C.H.S.	11-19-18
8	01/28/19	C.H.S.	-	-

APP: AUTOCAD 2008 VIB: RESIDENTIALDRIVE.DWG
FILE NUMBER: ENV-09

* RESIDENTIAL SIDEWALK SPECIFICATIONS *



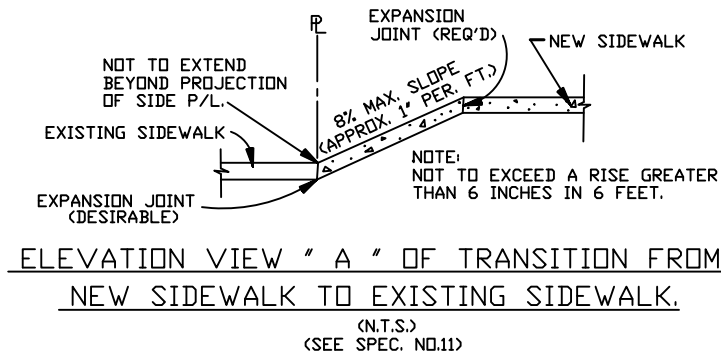
TYPICAL DETAIL FOR GOING AROUND
SIDEWALK OBSTRUCTION
(N.T.S.)

1. CONTACT THE DEPARTMENT OF ENGINEERING AT (504) 349-5173 PRIOR TO BEGINNING ANY SIDEWALK CONSTRUCTION. ANY DEVIATION FROM STANDARD DETAILS AND SPECIFICATIONS WILL NEED THE APPROVAL OF THE DIRECTOR OF ENGINEERING.
2. ALL SIDEWALKS SHALL BE CONSTRUCTED OF PORTLAND CEMENT CONCRETE AND HAVE A COMPRESSIVE STRENGTH OF TWENTY-FIVE HUNDRED (4000) POUNDS PER SQUARE INCH IN FOURTEEN (14) DAYS.
3. ALL (PCC) SIDEWALKS SHALL HAVE A MINIMUM THICKNESS OF FOUR (4) INCHES.
4. ALL (PCC) SIDEWALKS SHALL BE CONSTRUCTED AT A DISTANCE OF ONE (1) FOOT FROM THE PROPERTY LINE UNLESS OTHERWISE ALLOWED BY THE DIRECTOR OF THE DEPARTMENT OF ENGINEERING.
5. ALL (PCC) SIDEWALKS SHALL HAVE A MINIMUM WIDTH OF FIVE (5) FEET.
6. ALL (PCC) SIDEWALKS SHALL BE SCORED AT FOUR (4) FOOT INTERVALS TO A DEPTH OF 3/4".
7. ALL (PCC) SIDEWALK SHALL HAVE EXPANSION JOINTS NO FURTHER APART THAN TWENTY (20) FEET. EXPANSION JOINTS SHALL BE CONSTRUCTED OF THREE-FOURTH INCH TREATED (ROT-RESISTANT) TIMBER, OR REDWOOD WITH MINIMUM OF (3) NO. 3 SMOOTH DOWEL BARS. (LENGTH = 12")
8. ALL (PCC) EDGES SHALL BE TOOLED TO ONE-FOURTH (1/4) INCH RADIUS.
9. NO OBSTRUCTIONS OR OPEN GRATES FOR DRAIN LINES WILL BE ALLOWED IN SIDE WALK OR R.O.W. (SEE DETAIL FOR GOING AROUND OBSTRUCTIONS.)
10. HANDICAPPED RAMPS AT CORNERS WILL BE CONSTRUCTED WITH DETECTABLE WARNINGS CONSISTING OF TRUNCATED DOMES. (SEE TYPICAL DETAILS.)
11. TRANSITION RAMPS CONSTRUCTED WHERE NEW SIDEWALK MEETS EXISTING SIDEWALK SHALL HAVE A MAXIMUM SLOPE OF 8%, (1" DROP EVERY 12"). NOT TO EXTEND A RISE GREATER THAN 6 INCHES IN 6 FEET. SUCH RAMPS SHALL NOT EXTEND BEYOND THE PROJECTED SIDE PROPERTY LINES AND SHALL HAVE AN EXPANSION JOINT AT TOP OF SLOPE. PLACE EXPANSION JOINT AT BOTTOM OF SLOPE, IF POSSIBLE. (SEE ELEVATION VIEW "A").

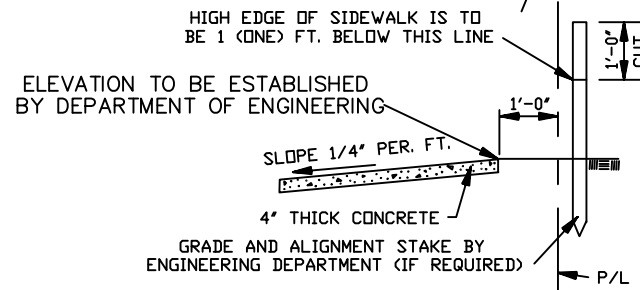
* FOR CONSTRUCTION OF SIDEWALKS ON PUBLIC RIGHT-OF-WAY WHICH TIE TO AN EXISTING ROADWAY WITHOUT AN EXISTING CURB, ELEVATION REQUIREMENTS MUST BE DETERMINED BY THE DEPARTMENT OF ENGINEERING. CONTACT THE DEPARTMENT AT (504) 349-5173 TO ARRANGE FOR DETERMINATION OF THE ELEVATION REQUIREMENTS.

NOTED:

PRE-POUR INSPECTIONS ARE REQUIRED. CALL THE DEPARTMENT OF ENGINEERING AT 504-349-5173 FOR APPOINTMENT.

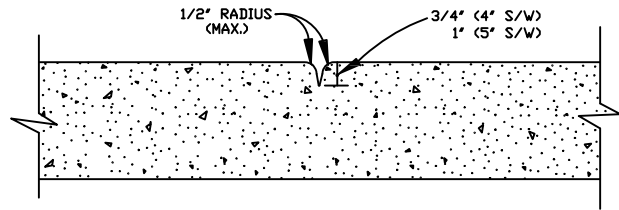


ELEVATION VIEW "A" OF TRANSITION FROM
NEW SIDEWALK TO EXISTING SIDEWALK.
(N.T.S.)
(SEE SPEC. NO.11)



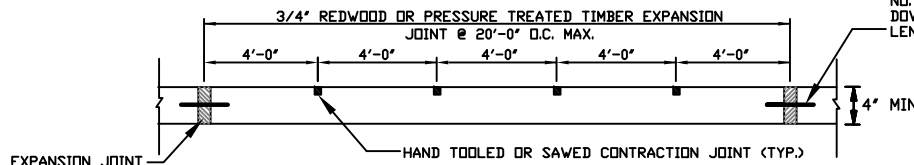
TYPICAL SECTION
(NO CURB)
(N.T.S.)

JEFFERSON PARISH DEPARTMENT OF ENGINEERING			
DRAWING TITLE STANDARD RESIDENTIAL SIDEWALK DETAILS			
DRAWN BY:	CH.S.	DATE:	06/11/04
CHECKED BY:	H.J.W.	DATE:	07/29/04
REVISOR BY:	C.H.S.	DATE:	02/09/07
REVISOR BY:	P.S.	DATE:	02/09/07
REVISOR BY:	J.L.	DATE:	06/01/07
REVISOR BY:	J.L.	DATE:	08/07/07
REVISOR BY:	J.L.	DATE:	05/12/08
REVISOR BY:	P.S.	DATE:	05/12/08
REVISOR BY:	C.J.	DATE:	05/13/11
REVISOR BY:	C.J.	DATE:	05/24/15
REVISOR BY:	J.W.	DATE:	01/20/16
REVISOR BY:	C.H.S.	DATE:	11-19-18
REVISOR BY:	-	DATE:	-
REVISOR BY:	-	DATE:	-
SOFT:	AUTOCAD 2008	FILE NUMBER:	ENV-09
APP:	VIM	PROJECT:	RESIDENTIALSIDEWALK.DWG

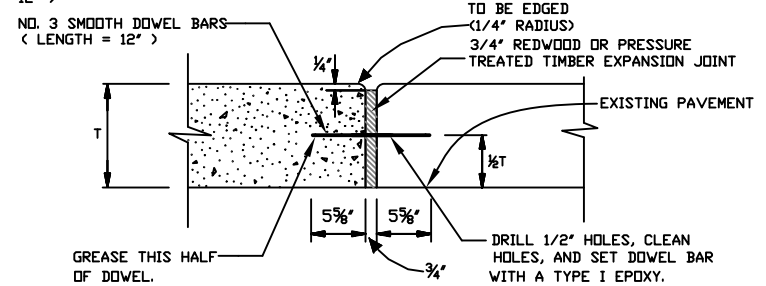


HAND TOOLED CONTRACTION JOINT

(MAXIMUM SPACING = 4'-0")
SCALE: 1/4" = 1'

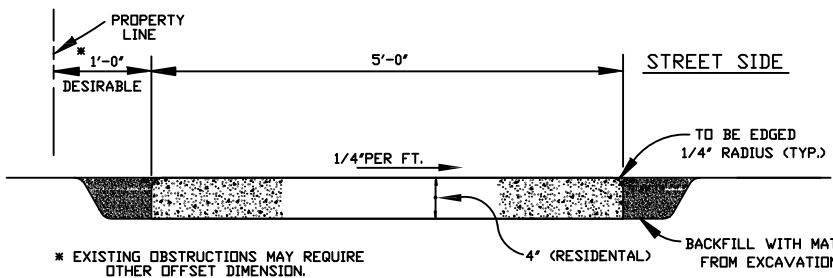


ELEVATION VIEW OF SIDEWALK



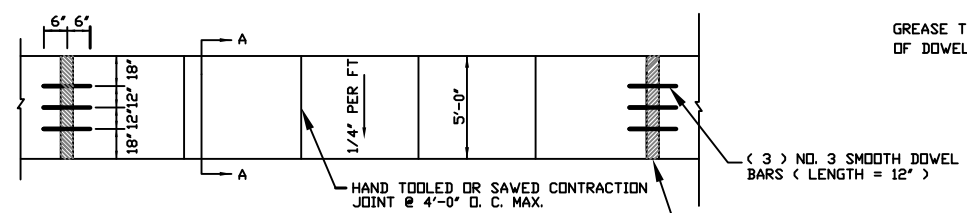
EXPANSION JOINT (TYPE "B")

(MAXIMUM SPACING = 20'-0")
N.T.S.



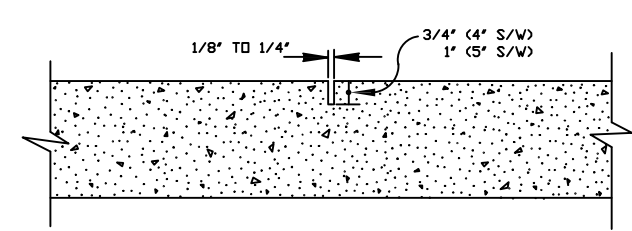
SECTION "A-A"

N.T.S.



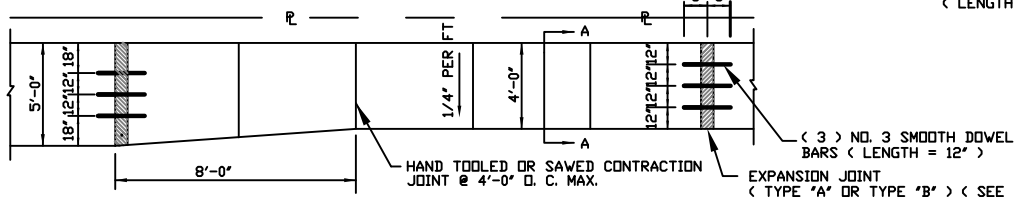
PLAN VIEW OF 5' SIDEWALK

N.T.S.



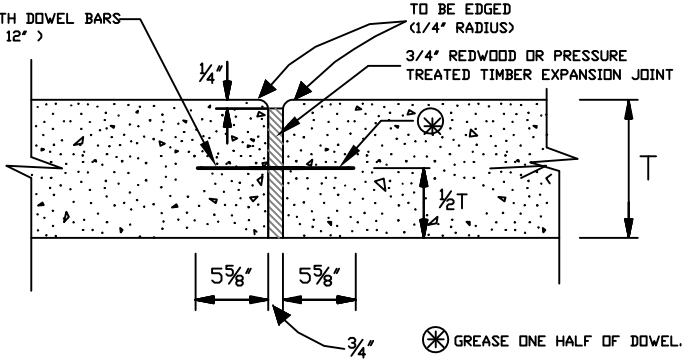
SAWED CONTRACTION JOINT

MAXIMUM SPACING = 4'-0"



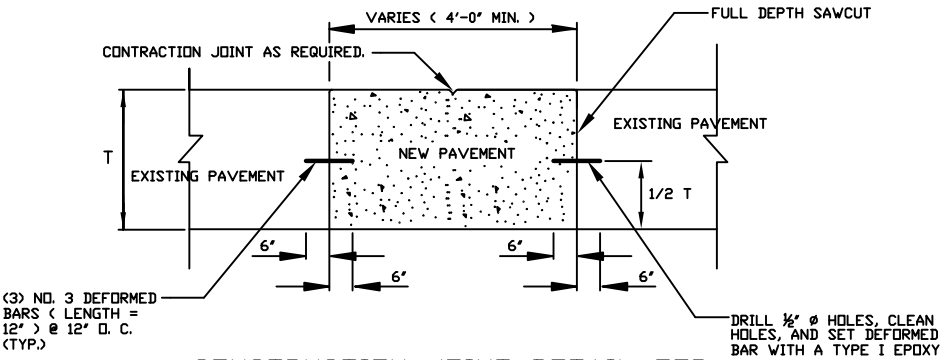
PLAN VIEW-TRANSITION OF 4' AND 5' SIDEWALKS

N.T.S.



EXPANSION JOINT (TYPE "A")

(MAXIMUM SPACING = 20'-0")
N.T.S.



CONSTRUCTION JOINT DETAIL FOR UTILITY CUTS AND/OR REPAIR SECTION

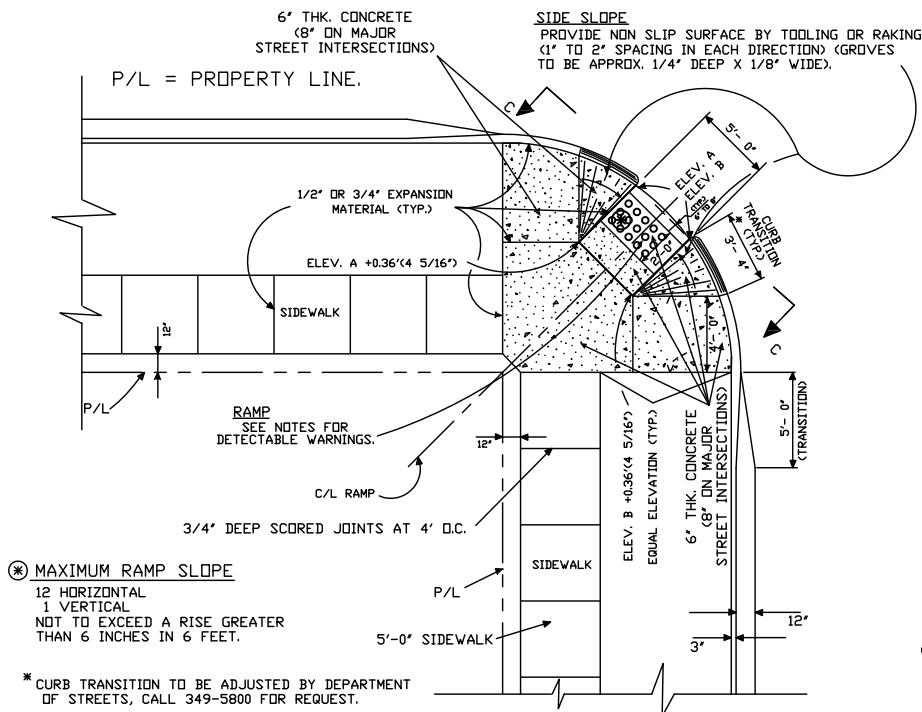
N.T.S.

NOTED!
PRE-POUR INSPECTIONS ARE REQUIRED. CALL THE DEPARTMENT OF ENGINEERING AT 504-349-5173 FOR APPOINTMENT.

NOTE:

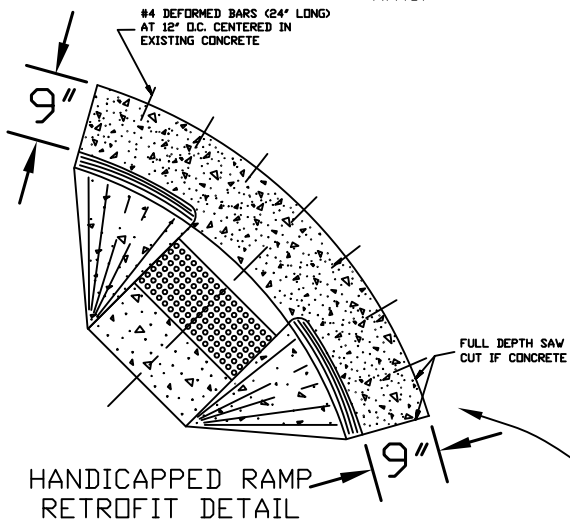
1. THE INSTALLATION OF 3FT. AND 4FT. WIDE SIDEWALKS WITHIN DEVELOPED AREAS OF JEFFERSON PARISH WILL REQUIRE THE APPROVAL OF THE ENGINEERING OPERATIONS/ MAINTENANCE PROGRAM MANAGER.

JEFFERSON PARISH DEPARTMENT OF ENGINEERING					
DRAWING TITLE					
STANDARD RESIDENTIAL SIDEWALK DETAILS					
DRAWN BY:	C.S.	DATE:	06/11/04	CHECKED BY:	H.J.W. DATE: 07/29/04
REVISION BY:	C.S.	DATE:	02/09/07	CHECKED BY:	P.S. DATE: 02/09/07
REVISION BY:	J.L.	DATE:	06/01/07	CHECKED BY:	J.L. DATE: 08/07/07
REVISION BY:	J.L.	DATE:	05/12/08	CHECKED BY:	P.S. DATE: 05/12/08
REVISION BY:	C.J.	DATE:	05/13/11	CHECKED BY:	C.J. DATE: 05/24/15
REVISION BY:	C.S.	DATE:	10/05/17	CHECKED BY:	C.S. DATE: 11-19-18
REVISION BY:	-	DATE:	-	CHECKED BY:	- DATE: -
SOFT:	AUTOCAD 2008		APP: RESIDENTIALSIDEWALK.DWG		
FILE NUMBER:	ENV-09				

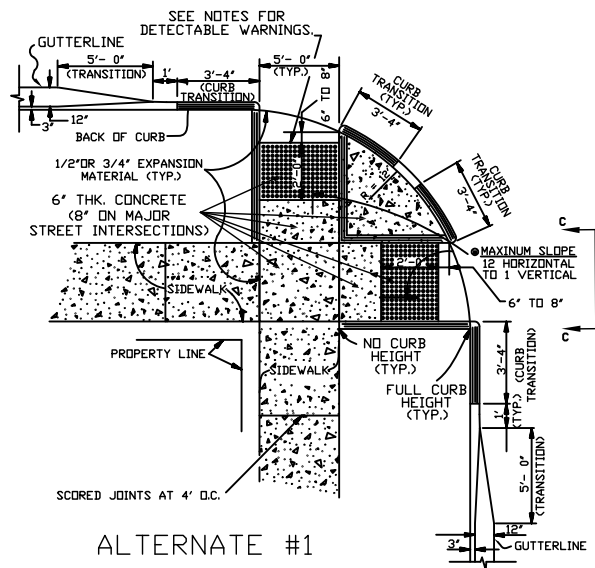


PLAN OF TYPICAL SIDEWALK WITH RAMP FOR HANDICAPPED

N.T.S.

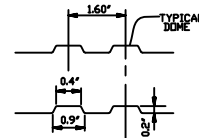


NOTE FOR HANDICAPPED RAMP CONNECTION TO EXISTING ROAD
 FOR CONCRETE ROADWAY CONTRACTOR SHALL MAKE FULL DEPTH SAW-CUT FROM THE GUTTER LINE 5' IN THE ROADBED, REPLACE WITH HANDICAPPED ACCESSIBLE CURBING IF CURB IS NOT POURED MONOLITHICALLY, CONCRETE WILL NEED TO BE DEPRESSED THREE (3) INCHES AT CURB LOCATIONS TO ALLOW FOR CURB DOWELS.
 FOR ASPHALT ROADWAY CONTRACTOR SHALL MAKE FULL DEPTH SAW-CUT TO REMOVE EXISTING CURB AND GUTTER (AND POSSIBLE ASPHALT OVERLAY), AND REPLACE WITH HANDICAPPED ACCESSIBLE CURBING. IF CURB IS NOT POURED MONOLITHICALLY WITH GUTTER, CONCRETE WILL NEED TO BE DEPRESSED THREE (3) INCHES AT CURB LOCATIONS TO ALLOW FOR CURB DOWELS.



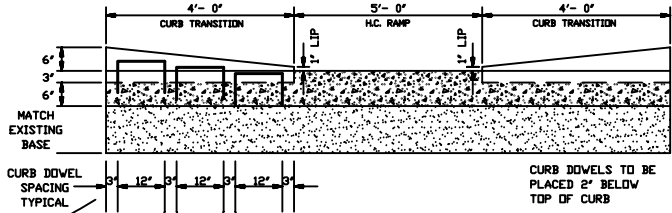
ALTERNATE #1
 PLAN OF CURB RAMP FOR THE HANDICAPPED

(WITH APPROVAL OF THE DEPT. OF ENGINEERING)
 (CORNER RADIUS = 12FT.)
 N.T.S.



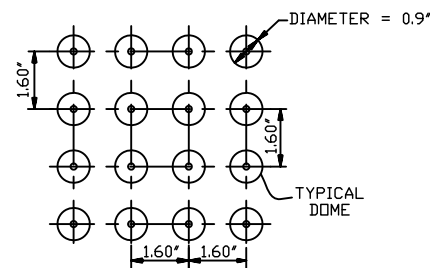
SECTION THRU TRUNCATED DOMES

(ADAAG DETECTABLE WARNINGS ON WALKING SURFACES 05/06/02)
 N.T.S.



H.C. RAMP CURB DETAIL VIEW "C-C"

N.T.S.



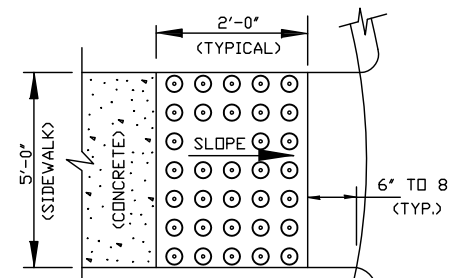
PARTIAL PLAN OF TRUNCATED DOMES

(ADAAG DETECTABLE WARNINGS ON WALKING SURFACES 05/06/02)
 (N.T.S.)

NOTES:

1. TRUNCATED DOMES IN A DETECTABLE WARNING SURFACE SHALL HAVE A BASE DIAMETER OF 0.9 INCHES (23 mm) MINIMUM TO 1.4 INCHES (36 mm) MAXIMUM, A TOP DIAMETER OF 50% OF THE BASE DIAMETER MINIMUM TO 65% OF THE BASE DIAMETER MAXIMUM, AND A HEIGHT OF 0.2 INCHES (5 mm).
2. TRUNCATED DOMES IN A DETECTABLE WARNING SURFACE SHALL HAVE A CENTER-TO-CENTER SPACING OF 1.6 INCHES (41 mm) MINIMUM AND 2.4 INCHES (61 mm) MAXIMUM, AND A BASE-TO-BASE SPACING OF 0.65 INCHES (16 mm) MINIMUM, MEASURED BETWEEN THE MOST ADJACENT DOMES ON SQUARE GRID.
3. TRUNCATED DOMES ON CURB RAMPS WITHIN THE STREET R.D.W. SHALL BE PREFABRICATED DETECTABLE WARNING UNITS INSTALLED DIRECTLY IN NEWLY POURED CONCRETE.
4. TRUNCATED DOMES SHALL COVER AT LEAST 2 FEET IN DEPTH AND EXTEND FULL WIDTH OF THE RAMP. ANY RAMP HAVING FLARED SIDES WILL NOT BE REQUIRED TO HAVE THESE DETECTABLE WARNINGS ON THE FLARES.
5. THE LIMITS OF THE MAIN SURFACE OF THE RAMP ON WHICH THE DETECTABLE WARNINGS ARE PLACED SHALL HAVE A REDDISH COLOR SIMILAR TO THAT OF 'TERRA COTTA'. THE COLOR MUST BE APPROVED BY JEFFERSON PARISH DEPARTMENT OF ENGINEERING.
6. STAMPING OF TRUNCATED DOMES WITHIN THE R.D.W. WILL NOT BE ALLOWED.

NOTED!
 PRE-POUR INSPECTIONS ARE REQUIRED. CALL THE DEPARTMENT OF ENGINEERING AT 504-349-5173 FOR APPOINTMENT.



PARTIAL PLAN SHOWING 2'-0" OFF SET FOR TRUNCATED DOMES
 N.T.S.

JEFFERSON PARISH DEPARTMENT OF ENGINEERING			
STANDARD RESIDENTIAL DETAILS FOR CONNECTING HANDICAPPED RAMPS TO EXISTING ROADWAYS			
DRAWN BY	DATE	CHECKED BY	DATE
C.S.	06/11/04	H.J.W.	07/29/04
REVISOR BY	DATE	REVISOR BY	DATE
C.S.	02/09/07	P.S.	02/09/07
REVISOR BY	DATE	REVISOR BY	DATE
J.L.	06/01/07	P.S.	06/01/07
REVISOR BY	DATE	REVISOR BY	DATE
J.L.	05/12/08	P.S.	05/12/08
REVISOR BY	DATE	REVISOR BY	DATE
C.H.S.	02/19/09	C.J.	10/08/10
REVISOR BY	DATE	REVISOR BY	DATE
C.J.	05/13/11	J.W.	07/28/14
REVISOR BY	DATE	REVISOR BY	DATE
CHS	01/18/17	C.H.S.	02/20/19
REVISOR BY	DATE	REVISOR BY	DATE
-	-	-	-
APPD	AUTOCAD 2008	VPM	RESIDENTIALHANDRAMP.DWG
FILE NUMBER	ENV-09		