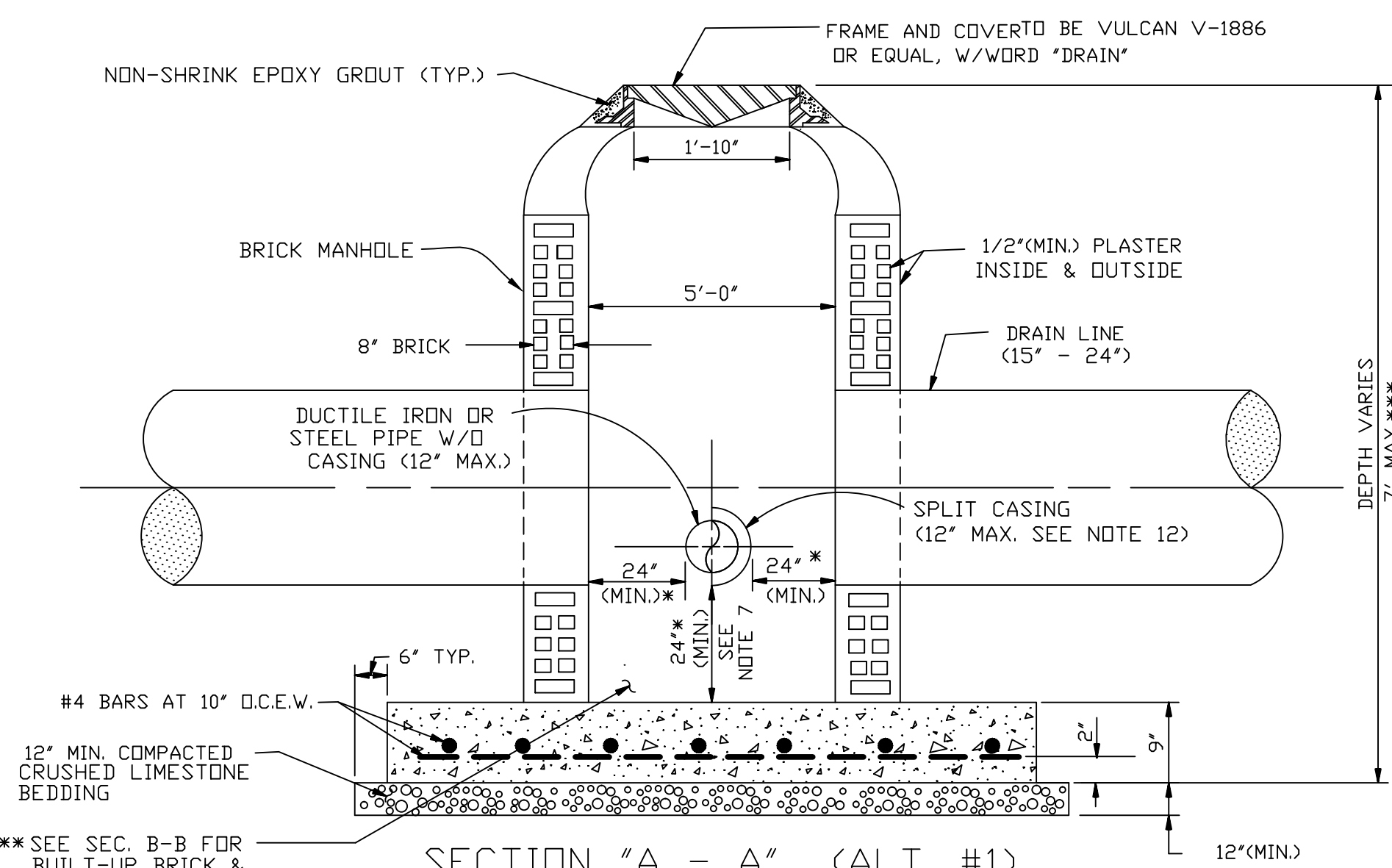
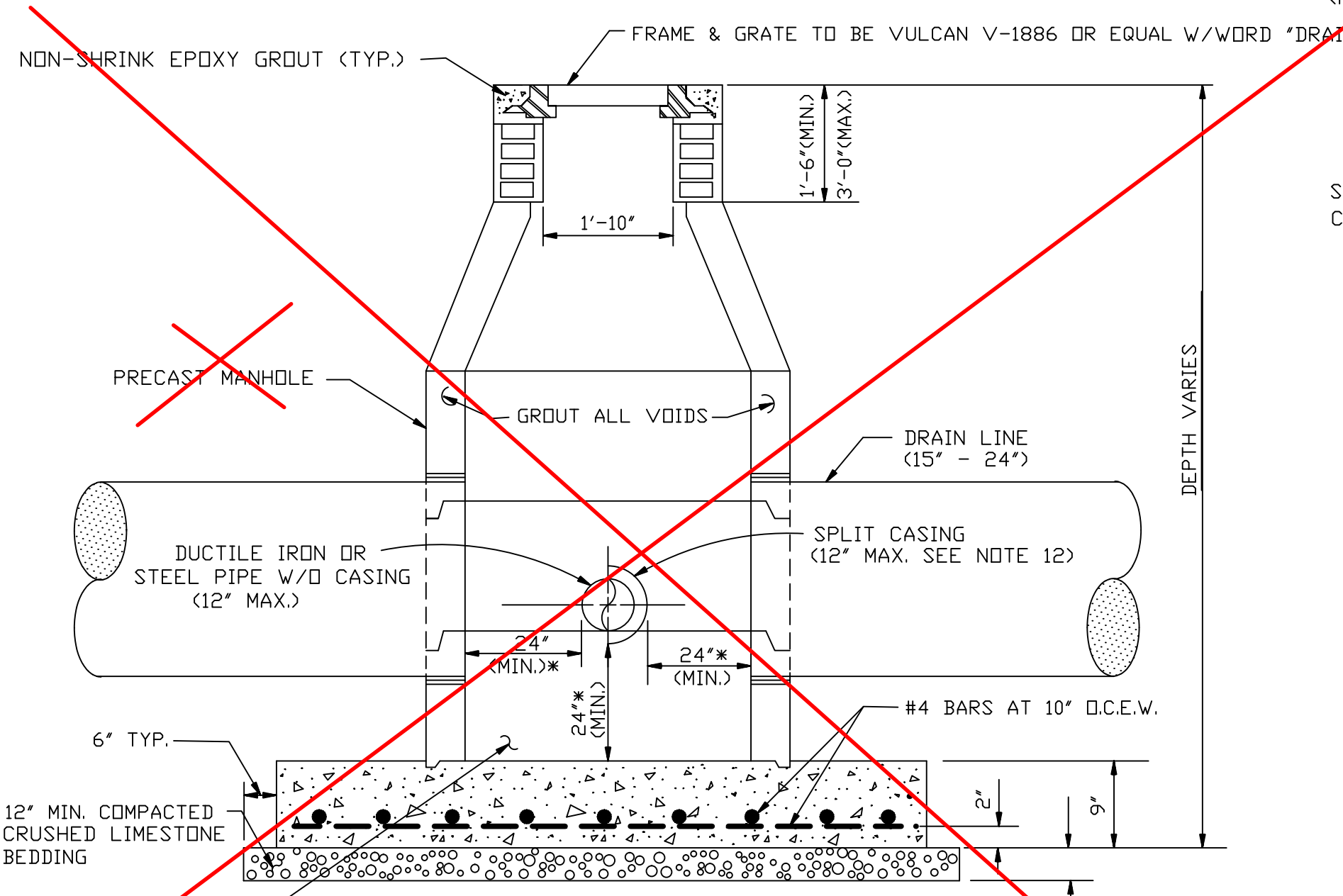


PLAN  
N.T.S.

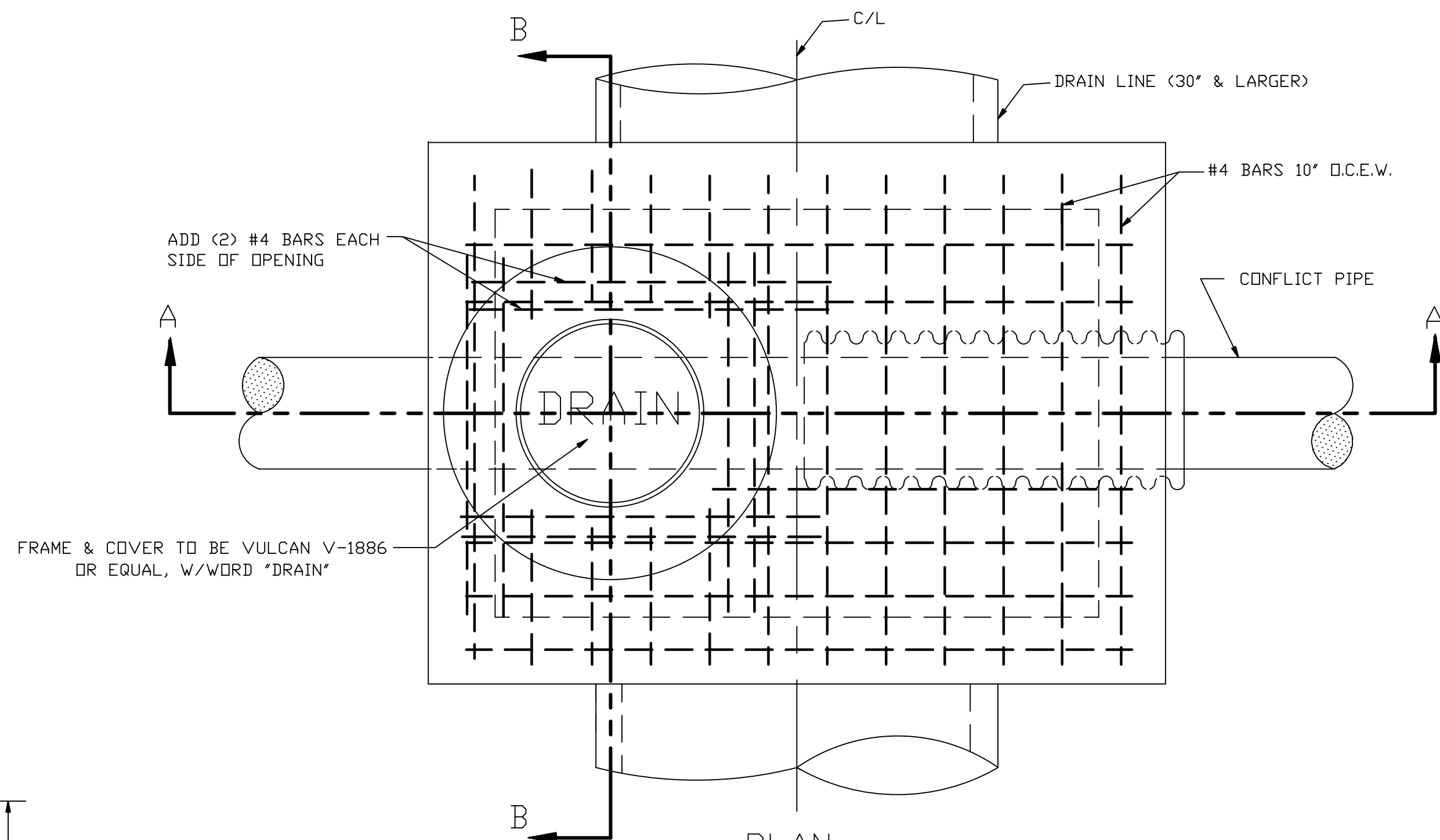


SECTION "A-A" (ALT. #1)  
N.T.S.

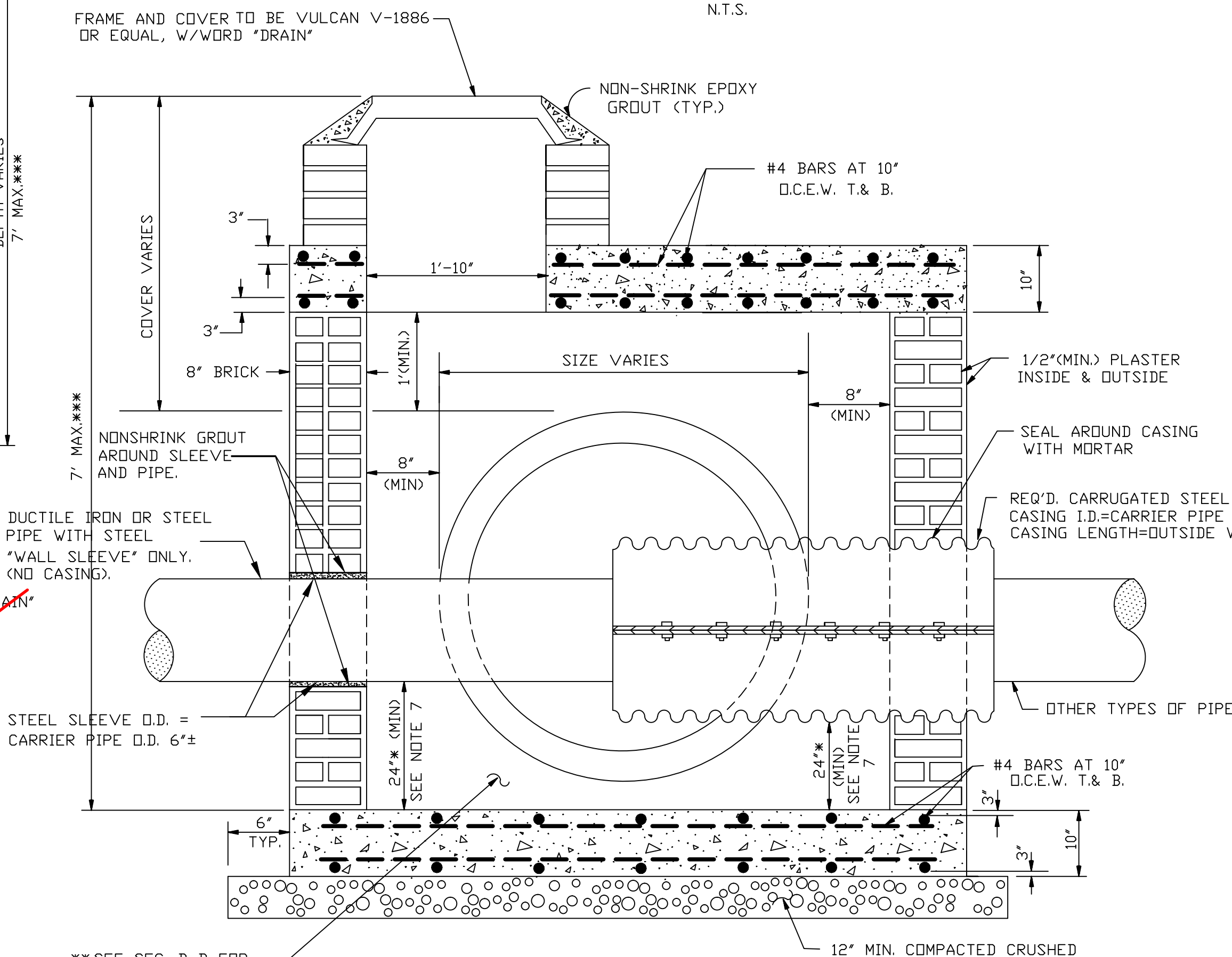


SECTION "A-A" (ALT. #2)

CONFLICT MANHOLE FOR DRAIN LINES (15'-24") DIA.  
N.T.S.

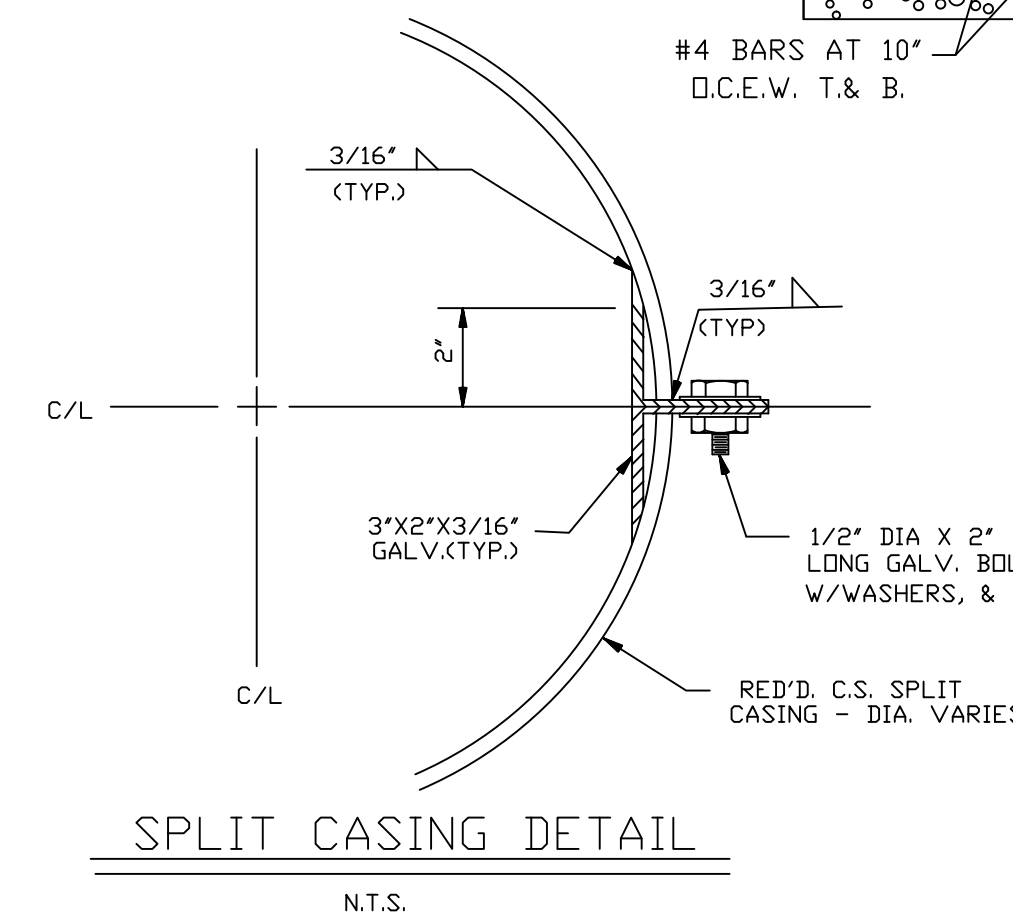


PLAN  
N.T.S.



SECTION "A-A"  
N.T.S.

CONFLICT BOX FOR DRAIN LINES (27" & LARGER) DIA.  
N.T.S.



SPLIT CASING DETAIL  
N.T.S.

NOTES:

1. CONCRETE STRENGTH TO BE 3000 PSI (MIN.) AT 28 DAYS.
2. REINFORCING STEEL SHALL CONFORM TO A.S.T.M. DESIGNATION A6150-GRADE 60.
3. ALL MASONRY TO BE LAID WITH RUNNING BOND AND HEADER COURSE, EVERY FOURTH LAYER.
4. THE MORTAR SHOULD BE TYPE "A", (C250 PSI COMPRESSION).
5. SPLIT CASING SHALL BE GALVANIZED STEEL, POLYMER COATED (10ML/10ML) IN ACCORDANCE WITH AASHTO DESIGNATIONS M-218, M-245 AND M-246: 16 GAGE.
6. THE BRICK SHALL CONFORM TO AASHTO DESIGNATION M91, MANHOLE BRICK GRADE MM.
7. IF BOTTOM ELEVATION OF THE CONFLICT IS ABOVE THE UPPER 3RD. OF THE INSIDE DIAMETER OF THE DRAIN LINE THE INVERT OF THE CONFLICT BOX COULD BE THE SAME AS THE INVERT OF THE DRAIN LINE SUBJECT TO THE APPROVAL OF THE PARISH.
8. ALL WATER LINES IN CONFLICT BOX SHALL BE DUCTILE IRON PIPE. OTHER PIPE MATERIAL SHALL BE INSTALLED IN SPLIT CASING.
9. CLEARANCES SHOWN ARE NOT FOR HYDRAULIC DESIGN PURPOSES, BUT ARE MINIMUM CLEARANCES REQUIRED FOR PROPER INSPECTION AND MAINTENANCE OF THE DRAINAGE SYSTEM. THE 24" MIN. CLEARANCES SHOWN WILL EXTEND FROM INNER WALL SURFACES OR THE INVERT OF THE CONFLICT BOX TO THE OUTSIDE OF THE CASING OR THE OUTER EDGE OF THE CASING FLANGE, WHICHEVER IS APPLICABLE. ALL CLEARANCES MODIFIED CONFLICT BOXES SHALL BE DESIGNED AND CONSTRUCTED, IF NECESSARY, TO PROVIDE FOR SMOOTH AND ADEQUATE FLOW OF THE DESIGN RUNOFF. AND OPENINGS OF MODIFIED CONFLICT BOXES SHALL BE COMPATIBLE WITH AND SIZED FOR THE DRAIN LINES IN CONFLICT. ONE OF THE FOLLOWING BOXES MUST BE CHECKED:
  - FOR MODIFIED CONFLICT BOX SEE DRAINAGE STRUCTURES DETAIL SHEETS.
  - USE PARISH STANDARD, THIS SHEET, NO MODIFIED CONFLICT BOX DETAIL IS INCLUDED IN THESE DRAWINGS.
10. MANHOLE STEPS SHALL BE INSTALLED IN CONFLICT BOXES 4'-0" DEEP AND OVER. MANHOLE STEPS SHALL CONFORM TO PARISH STANDARDS.
11. BRICK CONFLICT BOXES OVER 7' DEEP WILL REQUIRE 12" THICK WALLS BELOW THE 7' DEPTH.
12. THE PREFERRED METHOD OF INSTALLING SPLIT CASINGS IS TO HAVE THE FLANGES IN 3 O'CLOCK/9 O'CLOCK POSITIONS AS SHOWN IN SEC. B-B. INSTALLING SPLIT CASINGS WITH FLANGES IN OTHER POSITIONS SUCH AS 6 O'CLOCK/12 O'CLOCK POSITION IS PERMISSIBLE IN MANHOLES, WHICH ARE LIMITED TO 5'-0" IN DIAMETER.
13. PRECAST CONFLICT MANHOLES WILL NOT BE ALLOWED.

JEFFERSON PARISH  
DEPARTMENT OF ENGINEERING

CONFLICT STRUCTURES  
(STANDARD DETAIL)

DRAWN BY: P.D.	DATE: 05/31/96	REVISION BY: P.D.	DATE: 07/25/01
CHK'D BY: P.D.	DATE: 01/16/04	REVISION BY: J.C.	DATE: 12/06/11
REVISION BY: J.W.	DATE: 10/22/15	REVISION BY: -	DATE: -
REVISION BY: -	DATE: -	REVISION BY: -	DATE: -

XGDS: AUTOCAD LT. 2012    WIN: CONFLICTBOX.DWG  
FILE NUMBER: 1892